

**TOURISM INDICATORS**

AUSTRALIA

EMBARGO: 11:30AM (CANBERRA TIME) WED 28 FEBRUARY 2001

**C O N T E N T S**

	<i>page</i>
Notes . . . . .	2
Key tourism indicators . . . . .	3
In brief . . . . .	5
FEATURE ARTICLES	
Holiday Flats, Caravan Parks and Visitor Hostels, September Qtr 2000 . .	6
Tourism and the Household Expenditure Survey, 1998–99 . . . . .	9
TABLES	
List of tables . . . . .	13
Tourist accommodation . . . . .	15
International tourism . . . . .	53
ADDITIONAL INFORMATION	
Explanatory notes . . . . .	57
Glossary . . . . .	62

**PLEASE NOTE:**  
Some of the figures in this  
publication have been  
affected by the GST. See  
Data Notes on page 2.

- For further information about these and related statistics, contact Ashley Heddle on Canberra 02 6252 7186, or the National Information Service on 1300 135 070.

## NOTES

### FORTHCOMING ISSUES

<i>ISSUE (Quarter)</i>	<i>EXPECTED RELEASE DATE</i>
December 2000	11 May 2001
March 2001	10 August 2001

### DATA NOTES

ABS statistical series are being affected to varying degrees by The New Tax System (TNTS), introduced in Australia on 1 July 2000. TNTS included the removal of Wholesale Sales Tax and the introduction of a Goods and Services Tax (GST). A wide range of ABS data series will reflect significant immediate and subsequent impacts. From 1 July 2000, 'takings from accommodation' collected in the Survey of Tourist Accommodation are shown inclusive of GST. Therefore care should be taken when comparing takings data after 1 July 2000 with takings data from earlier periods. By including GST, the survey continues to measure the total cost of accommodation to the consumer. Takings relating to the supply of meals continue to be excluded and bed taxes have ceased to apply.

For the September quarter 2000, higher than usual takings from accommodation also reflect the impact of the Olympic Games on this series where tariffs were markedly higher in New South Wales during the month of September.

Estimates of takings from accommodation in both original and seasonally adjusted terms include unusual effects due to the Olympic Games and TNTS. The aim of trend estimates is to measure underlying behaviour, so the estimated impact of these unusual effects has been explicitly removed for New South Wales and users should note that the Australian trend aggregates are affected by the New South Wales specific treatment.

### CHANGES IN THIS ISSUE

Delays are being experienced in obtaining final Overseas Arrivals and Departures data from the Department of Immigration and Multicultural Affairs which is in the process of automating passenger card procedures.

How delays affect this September quarter 2000 issue:

- limited short-term overseas visitor arrivals statistics are included — tables 28 and 29 only. Data for the months, August and September 2000 (and subsequently the September quarter) are preliminary and subject to revision; and
- no departure statistics are provided.

Effect on future issues:

- The ABS expects to include final overseas arrivals and departures tables for September and December quarters in the March quarter 2001 issue of this publication (due for release in August 2001). Preliminary data will continue to be included in Tables 28 and 29 until final data is available.

Dennis Trewin  
Australian Statistician

# KEY TOURISM INDICATORS

			Latest figures	Percentage change on	
	Unit	Period	Value	Previous period	Corresponding period last year
<b>Tourist accommodation—supply and demand(a)</b>					
Licensed hotels, motels, guest houses and serviced apartments					
Establishments	no.	Sep qtr 2000	3 827	2.6	2.9
Guest rooms/units	'000	Sep qtr 2000	195.1	4.4	5.3
Bed spaces	'000	Sep qtr 2000	569.0	3.4	4.1
Room nights occupied	'000	Sep qtr 2000	10 448.6	0.5	10.8
Room occupancy rate(b)	%	Sep qtr 2000	58.4	−3.9	3.9
Guest nights	'000	Sep qtr 2000	18 588.8	−0.2	13.3
Guest arrivals	'000	Sep qtr 2000	7 978.9	−3.9	6.1
Takings from accommodation	\$m	Sep qtr 2000	1 302.2	20.8	37.6
Caravan parks(c)					
Establishments	no.	End Sep 2000	1 803	−4.4	—
Powered sites and cabins	no.	End Sep 2000	200 377	−0.9	—
Holiday flats, units and houses(c)					
Letting Entities	no.	End Sep 2000	631	−2.9	—
Flats, units and houses	no.	End Sep 2000	28 232	3.0	—
Visitor hostels(c)					
Establishments	no.	End Sep 2000	466	19.8	—
Bed spaces	no.	End Sep 2000	40 336	33.9	—
<b>Tourist accommodation construction</b>					
Hotels, etc. approved(d)	\$m	Nov 2000	31.2	−3.3	−23.7
Hotels, etc. commenced(e)	\$m	Sep qtr 2000	90.4	13.7	−51.4
Hotels, etc. under construction(e)	\$m	Sep qtr 2000	1 011.2	−20.5	−39.0
Hotels, etc. completed(e)	\$m	Sep qtr 2000	345.9	10.0	−12.9
<b>Domestic tourism(f)</b>					
Number of overnight trips	'000	Year end Mar 2000	73 101	0.2	0
Number of visitor nights	'000	Year end Mar 2000	293 026	−0.4	−1
<b>International visitor arrivals</b>					
Number of visitor arrivals(g)	'000	Sep 2000	(p)406.5	16.8	14.3
Number of visitor arrivals(g)	'000	Sep qtr 2000	(p)1 203.8	12.2	9.7
Number of visitor arrivals(g)	'000	Year end Jun 2000	4 651.8	—	7.0
Number of person days(h)	'000	Jun qtr 2000	28 195.4	−34.4	18.8
Median intended length of stay(h)	days	Jun qtr 2000	10.2	−3.8	1.0
Expenditure by international visitors(i)	\$m	Year end Jun 2000	9 368.6	—	5.0
International visitor nights(i)	'000	Year end Jun 2000	113 176	—	8.8
<b>Australian departures</b>					
Short-term departures(g)	'000	Jul 2000	296.9	−2.3	3.6
Short-term departures(g)	'000	Jun qtr 2000	896.4	24.2	12.6
Short-term departures(g)	'000	Year end Jun 2000	3 332.3	—	4.5
Number of person days(h)	'000	Jun qtr 2000	32 524.4	18.1	12.2
Median intended length of stay(h)	days	Jun qtr 2000	16.3	10.9	1.2

(a) Tourist Accommodation, Australia (Cat. no. 8635.0).

(b) Change is shown in terms of percentage points.

(c) For caravan parks, holiday flats and units, and visitor hostels the previous period refers to September quarter 1997.

(d) Building Approvals, Australia (Cat. no. 8731.0).

(e) Building Activity, Australia (Cat. no. 8752.0).

(f) Bureau of Tourism Research, National Visitor Survey: Travel by Australians

(g) Overseas Arrivals and Departures, Australia (Cat. no. 3401.0).

(h) Unpublished data, Overseas Arrivals and Departures.

(i) Bureau of Tourism Research, International Visitor Survey. Excludes international airfares and inclusive package tours purchased outside Australia.

...continued

KEY TOURISM INDICATORS — *continued*

			Latest figures	Percentage change on	
	Unit	Period	Value	Previous period	Corresponding period last year
<b>Retail turnover(a)</b>					
Hospitality and services					
Hotels and licensed clubs	\$m	Nov 2000	1 311.8	0.7	5.6
Cafes and restaurants	\$m	Nov 2000	746.7	-2.9	8.8
Selected services	\$m	Nov 2000	235.0	1.8	23.2
<b>Price index(b)</b>					
Holiday travel and accommodation	1989-90=100	Dec qtr 2000	117.5	-0.2	5.4
<b>Employment and earnings</b>					
Accommodation, cafes and restaurants					
Number employed(c)	'000	Nov 2000	480.0	4.6	8.9
Average weekly hours worked(c)	hours	Nov 2000	33.4	1.8	0.0
Proportion employed part-time(c)(d)	%	Nov 2000	44.6	-4.9	0.7
Average total weekly earnings(e)	\$	Aug 2000	391.2	2.4	12.7
Female/male ratio of average total full-time weekly earnings(c)(d)	%	Aug 2000	0.89	1.1	1.1
<b>Unemployment rate(c)(d)</b>					
Worked full time for two weeks or more in the last two years in accommodation, cafes and restaurants	%	Nov 2000	3.7	-11.9	-27.5
<b>Balance of payments(f)</b>					
Travel credits	\$m	Sep qtr 2000	3 780	27.0	20.7
Travel debits	\$m	Sep qtr 2000	-2 881	15.7	10.8
Balance on travel services	\$m	Sep qtr 2000	899	85.0	68.7
<b>Exchange rates(g)</b>					
United States dollar	per \$A	Jan 2001	0.5501	0.3	-14.0
Japanese yen	per \$A	Jan 2001	63.96	8.1	-6.9
Euro	per \$A	Jan 2001	0.5987	-4.7	-9.2

(a) Retail Trade, Australia (Cat. no. 8501.0).

(b) Consumer Price Index (Cat. no. 6401.0); base year: 1989-90=100.

(c) Labour Force, Australia (Cat. no. 6203.0).

(d) Change is shown in terms of percentage points.

(e) Average Weekly Earnings, States and Australia (Cat. no. 6302.0).

(f) Balance of Payments, Australia (Cat. no. 5302.0).

(g) Average of Daily Exchange Rates, Australia (Cat. no. 5654.0)

## IN BRIEF

### OVERSEAS ARRIVALS AND DEPARTURES DATA

The Department of Immigration and Multicultural Affairs (DIMA) is currently automating the processing of passenger cards. Delays are being experienced in obtaining final Overseas Arrivals and Departures data commencing with the month of August 2000. Preliminary monthly data will continue to be available in *Overseas Arrivals and Departures, Australia* (Cat. no. 3401.0).

For further information about OAD data availability and release dates contact Amanda Dobson on Canberra 02 6252 5640.

### THE NEW TAX SYSTEM AND THE SURVEY OF TOURIST ACCOMMODATION

With the introduction of the new tax system on 1 July 2000, there have been some impacts on the collection of quarterly data from the Survey of Tourist Accommodation (STA). The item 'takings from accommodation' is now *inclusive* of the Goods and Services Tax (GST), beginning with the September quarter 2000. By including GST, the survey will continue to measure the total cost of accommodation to the consumer. Takings relating to the supply of meals continue to be excluded and bed taxes have ceased to apply. For further information contact Paull Hoffmann on Brisbane 07 3222 6118.

### 25 YEARS OF THE SURVEY OF TOURIST ACCOMMODATION (STA)

The June quarter 2000 marked the completion of 25 years of the Survey of Tourist Accommodation conducted by the ABS. A history of changes to the survey will be included in the December quarter 2000 issue of this publication.

FEATURE ARTICLE

HOLIDAY FLATS, CARAVAN PARKS AND VISITOR HOSTELS  
— SEPTEMBER QUARTER 2000

INTRODUCTION

For the four quarters of the year 2000, the Survey of Tourist Accommodation (STA) has been expanded to include, in addition to licensed hotels, motels, guest houses and serviced apartments, the following sectors:

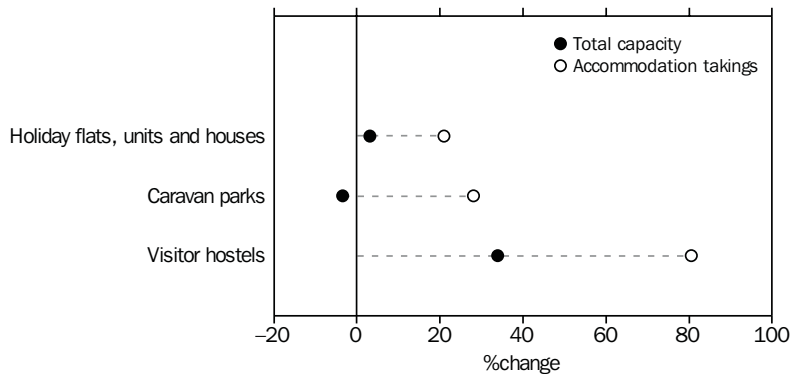
- holiday flats, units and houses of letting entities with 15 or more rooms or units;
- caravan parks with 40 or more powered sites; and
- visitor hostels with 25 or more beds.

FINDINGS

This article examines the findings for the September quarter 2000 for these sectors and makes comparisons with data from the corresponding period in 1997.

Overall the figures show that visitor hostels have continued to exhibit strong growth in both capacity and takings, while caravan parks have continued to show strong growth in the higher yield cabin sites at the expense of other site capacity. This growth is reflected in an overall increase in takings for caravan parks since the September quarter 1997.

CAPACITY AND ACCOMMODATION TAKINGS, Australia(a)



(a) September quarter 2000 on September quarter 1997.

Holiday flats, units and houses

The number of flats, units and houses increased by 3% between the September quarter 1997 and the September quarter 2000 to 28,232. Takings increased by 21% to \$104 million in the September quarter 2000 compared to the equivalent 1997 period.

Queensland had the majority (51%) of all holiday flats, units and houses in the September quarter 2000, followed by New South Wales with 33%. The Northern Territory had the highest occupancy rate of 83% in the September quarter 2000, followed by the Australian Capital Territory with 64%. South Australia had the lowest occupancy rate of 32%. Of the \$104 million in takings in the September quarter 2000, Queensland had the largest share with 59%, followed by New South Wales at 24% while Tasmania had the least with less than 1% share.

Caravan parks The capacity available in caravan parks fell by 3.5% between the September quarter 1997 and the September quarter 2000, with numbers of other powered and unpowered sites in caravan parks decreasing by 6% (13,844) and on-site van numbers decreasing by 9% to 15,756. This fall was partially offset with cabins in caravan parks increasing by 37% to 23,942. These changes in the nature of caravan parks are reflected in an increase in takings over the three year period of 28% to \$154.9 million. Takings per site night occupied in caravan parks increased slightly over the same period, up from \$11 to be \$14 in the September quarter 2000.

Short-term caravan parks lifted their share of capacity by 1% to 71% on long-term caravan parks (29%) over the three year period. New South Wales had a third (34%) of all caravan park capacity in the September quarter 2000, with cabins increasing by 61% between the September quarter 1997 and the September quarter 2000. New South Wales also had a site occupancy rate of 54% in the September quarter 2000, unchanged from the previous quarter. Queensland had the highest site occupancy rate in the September quarter 2000 of 58% while the Australian Capital Territory had the lowest at 32%.

Visitor hostels In the September quarter 2000, there was a 34% increase in visitor hostel bed spaces available nationally with takings increasing by 80% to \$34.7 million compared with the September quarter 1997. Visitor hostels showed an increase in average takings per guest night to \$20 in the September quarter 2000 from \$15 in the September quarter 1997.

Queensland held the largest percentage share of total number of visitor hostel bed spaces at 32%, which has not changed between the two September quarter periods 1997 and 2000. New South Wales increased its share of bed spaces from 22% in the September quarter 1997 to 25% in the September quarter 2000. Victoria's share increased from 12% to 15%. Western Australia increased its share from 10% to 11%. The share of bed spaces fell in the Northern Territory to 8%, in South Australia to 5% and in Tasmania from 6% to 4% between the September quarter 1997 and the September quarter 2000.

The highest bed occupancy rate for visitor hostels in the September quarter 2000 occurred in the Northern Territory, which, at 64%, was well above the 48% occupancy rate for Australia, and 4 percentage points higher than for the June quarter 1997. The lowest bed occupancy rate was in Tasmania with 12%. The bed occupancy rate in South Australia increased from 28% to 34% and Western Australia increased from 37% to 40% between the September quarter 1997 and the September quarter 2000. Queensland increased by one percentage point to 59% when compared with the previous period. The occupancy rate for Victoria remained unchanged at 32% over the period while New South Wales decreased from 56% in the September quarter 1997 to 51% in the September quarter 2000.

Further information can be found in *Tourist Accommodation, Australia* (Cat. no. 8635.0), available from ABS bookshops or by contacting Paul Hoffmann on Brisbane 07 3222 6201. A summary of the main findings are available on the ABS web site, at [www.abs.gov.au](http://www.abs.gov.au) via the Tourism Theme Page.

#### TOURIST ACCOMMODATION — SELECTED ACCOMMODATION ESTABLISHMENTS

	September quarter 1997	September quarter 2000	% change
Holiday flats, units and houses(a)			
Letting entities (no.)	650	631	-2.9
Capacity—flats, units and houses (no.)	27 418	28 232	3.0
Unit nights occupied ('000)	1 335	1 273	-4.6
Unit occupancy rates (%) (b)	52.9	49.2	-3.7
Unit lettings ('000)	222	247	11.3
Average length of stay (days)	6.0	5.1	-15.0
Takings from accommodation (\$'000)	86 219	104 345	21.0
Persons employed (no.)	2 742	2 781	1.4
Caravan parks(c)			
Establishments (no.)			
Short-term caravan parks	1 216	1 194	-1.8
Long-term caravan parks	669	609	-9.0
Total caravan parks	1 885	1 803	-4.4
Capacity (no.)			
On-site vans	17 268	15 756	-8.8
Other powered sites	167 484	160 679	-4.1
Unpowered sites	51 681	44 642	-13.6
Cabins, flats etc.	17 517	23 942	36.7
Total capacity	253 950	245 019	-3.5
Site nights occupied ('000)	11 038	11 171	1.2
Site occupancy rates (%) (b)	47.3	49.6	2.3
Takings from accommodation (\$'000)	121 041	154 908	28.0
Persons employed (no.)	8 448	8 986	6.4
Visitor hostels(d)			
Establishments (no.)	389	466	19.8
Capacity—bed spaces	30 128	40 336	33.9
Guest nights (no.)	1 315 598	1 778 447	35.2
Bed occupancy rates (%) (b)	47.6	48.0	0.4
Average length of stay (days)	2.5	2.6	4.0
Takings from accommodation (\$'000)	19 238	34 718	80.5
Persons employed (no.)	1 985	3 071	54.7

(a) Of letting entities with 15 or more units.

(b) Change is shown in terms of percentage points.

(c) With 40 or more powered sites.

(d) With 25 or more beds.



## FEATURE ARTICLE

## TOURISM AND THE HOUSEHOLD EXPENDITURE SURVEY

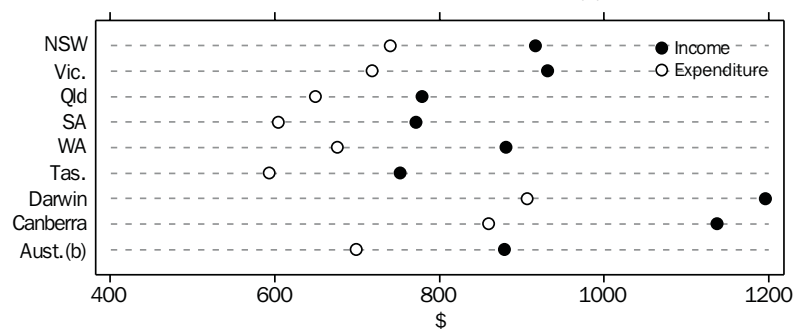
### INTRODUCTION

In September 2000 the ABS released detailed results for the 1998–99 Household Expenditure Survey (HES). The 1998–99 HES collected information on the income, expenditure and characteristics of households resident in private dwellings throughout Australia. This article examines the results of the 1998–99 HES, with an emphasis on the socioeconomic and geographic breakdown of tourism related data such as recreational spending and expenditure on holidays.

### HOUSEHOLD CHARACTERISTICS

In the 12 months to June 1999, Australian households spent an average of \$699 each week on goods and services, representing a 16% increase since the previous survey conducted in 1993–94. Part of this increase can be attributed to inflation — over the 5 years since the previous survey, the price of goods and services, as measured by the CPI, rose by 10%. Over the same period, Australian average weekly household income increased by 22% to \$879, while the average household size was unchanged at 2.6 people.

AVERAGE WEEKLY HOUSEHOLD INCOME AND EXPENDITURE(a)



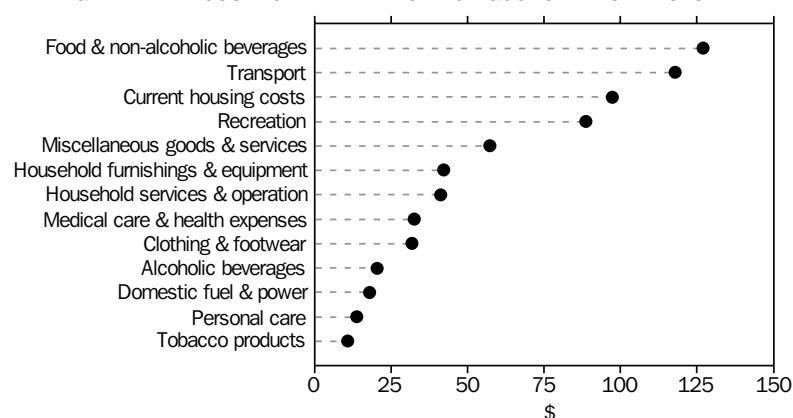
(a) Refer to Household Expenditure Survey, Australia: Detailed Expenditure Items, 1998–99 (Cat. no. 6535.0) for details relating to measurement of income and expenditure.  
(b) Includes Northern Territory households outside Darwin.

In 1998–99, the largest broad categories of household expenditure were:

- food and non-alcoholic beverages, with average household expenditure of \$127 per week, representing 18% of total household expenditure on goods and services;
- transport, \$118 per week, 17% of total; and
- current housing costs, \$97 per week, 14% of total.

As in 1993–94, these categories together accounted for around half of household expenditure on goods and services. The next highest category was recreation, representing 13% of the total.

AVERAGE WEEKLY HOUSEHOLD EXPENDITURE ON GOODS AND SERVICES



## RECREATION

Spending on recreational goods and services such as holidays, books, gambling and sports fees differed between households depending on characteristics such as income, household composition, size of household and location. In 1998–99, Australian households spent an average of \$89 per week on recreation, representing 13% of their total weekly expenditure. High proportions of recreational expenditure related to:

- Holidays — domestic, 18% of average weekly household recreational expenditure,
- Holidays — international, 14%,
- Books, newspapers, magazines and other printed material, 9%.

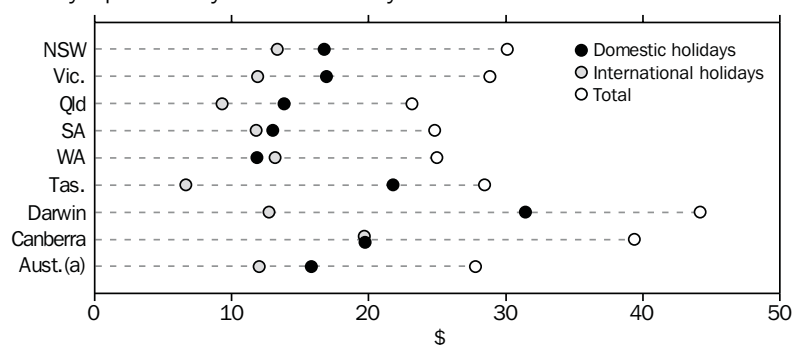
Households in the lowest income quintile (the lowest 20% of 1998–99 households when ranked according to income) spent on average \$37 per week (or 11% of average weekly household expenditure) on recreation, \$52 less than the national average and \$129 less than the \$166 (or 14% of average weekly household expenditure) spent by households in the highest income quintile (the highest 20% of households when ranked according to income).

Average weekly household expenditure on recreational goods and services was high in the two territories capital cities at \$121. Of the States, expenditure was high in New South Wales (\$92) and low in Queensland and Tasmania (both at \$81 per week).

## HOLIDAY EXPENDITURE

Australian households spent about a third of the average weekly recreation expenditure on domestic and international holidays for the year ending June 1999. Selected expenses on Australian domestic holidays, which predominately include a combination of transport and accommodation costs, averaged \$16 per week, with Darwin (\$31), Tasmania (\$22) and Canberra (\$20) averaging the highest weekly expenditure by region. Average expenditure on overseas holidays was lower at \$12 per week, with Canberra (\$20) and New South Wales and Western Australia (\$13) averaging the highest.

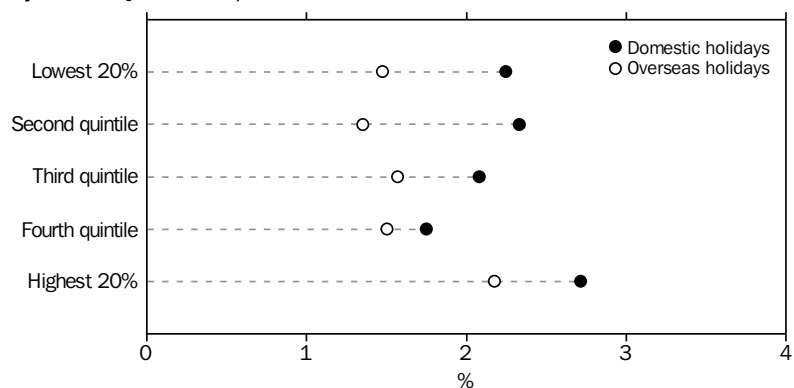
AVERAGE WEEKLY HOUSEHOLD EXPENDITURE,  
Holiday expenditure by State and Territory



(a) Includes Northern Territory households outside Darwin.

When examined by household income quintile group for 1998–99, households in the lowest income quintile spent on average \$8 per week, or 2% of total expenditure, on domestic holidays, which is four times less than the \$32 per week, or 3% of total expenditure by households in the highest income quintile group. When it came to international holidays, households in the lowest income quintile spent on average \$5 per week, or 1% of total expenditure, five times less than the \$25 per week, or 2% of total expenditure by households in the highest income quintile.

PROPORTION OF TOTAL EXPENDITURE ALLOCATED TO HOLIDAYS,  
By Income Quintile Group



Further information can be found in *Household Expenditure Survey, Australia: Detailed Expenditure Items, 1998–99* (Cat. no. 6535.0), by contacting Jan Gatenby on Canberra 02 6252 6174, or the National Information Service on 1300 135 070.

HOUSEHOLD CHARACTERISTICS AND EXPENDITURE, BY HOUSEHOLD INCOME QUINTILE GROUP(a)

	<i>Lowest 20%</i>	<i>Second quintile</i>	<i>Third quintile</i>	<i>Fourth quintile</i>	<i>Highest 20%</i>	<i>All households</i>
Household Characteristics						
Upper boundary of income quintile group (\$)	300	552	884	1 373	..	..
Average weekly household income (\$)	160	414	712	1 116	1 996	879
Average number of persons in household	1.52	2.35	2.75	3.04	3.33	2.60
Average Weekly Household Expenditure (\$)						
Total goods and services expenditure	343	483	648	851	1 171	699
Recreation	37	58	79	105	166	89
Holidays — Australia (selected expenses)	8	11	13	15	32	16
Holidays — Overseas (selected payments)	5	7	10	13	25	12

(a) Average weekly household expenditure may be greater than average weekly income — refer to Household Expenditure Survey, Australia: Detailed Expenditure Items, 1998–99 (Cat. no. 6535.0) for further details.

HOUSEHOLD CHARACTERISTICS AND EXPENDITURE, BY STATE AND TERRITORY(a)

	<i>State</i>						<i>Territory</i>		
	<i>NSW</i>	<i>Vic.</i>	<i>Qld</i>	<i>SA</i>	<i>WA</i>	<i>Tas.</i>	<i>Darwin</i>	<i>Canberra</i>	<i>Aust.(b)</i>
Household Characteristics									
Average weekly household income (\$)	917	931	779	771	881	752	1 196	1 137	879
Average number of persons in household	2.65	2.66	2.56	2.42	2.53	2.49	2.99	2.56	2.60
Average Weekly Household Expenditure (\$)									
Total goods and services expenditure	740	718	649	604	676	593	906	860	699
Recreation	92	91	81	84	87	81	121	121	89
Holidays — Australia (selected expenses)	17	17	14	13	12	22	31	20	16
Holidays — Overseas (selected payments)	13	12	9	12	13	7	13	20	12

(a) Average weekly household expenditure may be greater than average weekly income — refer to Household Expenditure Survey, Australia: Detailed Expenditure Items, 1998–99 (Cat. no. 6535.0) for further details.

(b) Includes Northern Territory households outside Darwin.

## LIST OF TABLES

Page

### TOURIST ACCOMMODATION

Australia	<b>1</b>	Hotels, motels, guest houses and serviced apartments, time series	18
	<b>2</b>	Accommodation establishments, September quarter 1999 and September quarter 2000	19
	<b>3</b>	Takings, accommodation establishments, September quarter 1999 and September quarter 2000	20
New South Wales	<b>4</b>	Hotels, motels, guest houses and serviced apartments, time series	22
	<b>5</b>	Accommodation establishments, September quarter 1999 and September quarter 2000	23
	<b>6</b>	Takings, accommodation establishments, September quarter 1999 and September quarter 2000	24
Victoria	<b>7</b>	Hotels, motels, guest houses and serviced apartments, time series	26
	<b>8</b>	Accommodation establishments, September quarter 1999 and September quarter 2000	27
	<b>9</b>	Takings, accommodation establishments, September quarter 1999 and September quarter 2000	28
Queensland	<b>10</b>	Hotels, motels, guest houses and serviced apartments, time series	30
	<b>11</b>	Accommodation establishments, September quarter 1999 and September quarter 2000	31
	<b>12</b>	Takings, accommodation establishments, September quarter 1999 and September quarter 2000	32
South Australia	<b>13</b>	Hotels, motels, guest houses and serviced apartments, time series	34
	<b>14</b>	Accommodation establishments, September quarter 1999 and September quarter 2000	35
	<b>15</b>	Takings, accommodation establishments, September quarter 1999 and September quarter 2000	36
Western Australia	<b>16</b>	Hotels, motels, guest houses and serviced apartments, time series	38
	<b>17</b>	Accommodation establishments, September quarter 1999 and September quarter 2000	39
	<b>18</b>	Takings, accommodation establishments, September quarter 1999 and September quarter 2000	40
Tasmania	<b>19</b>	Hotels, motels, guest houses and serviced apartments, time series	42
	<b>20</b>	Accommodation establishments, September quarter 1999 and September quarter 2000	43
	<b>21</b>	Takings, accommodation establishments, September quarter 1999 and September quarter 2000	44

			Page
Northern Territory	<b>22</b>	Hotels, motels, guest houses and serviced apartments, time series	46
	<b>23</b>	Accommodation establishments, September quarter 1999 and September quarter 2000	47
	<b>24</b>	Takings, accommodation establishments, September quarter 1999 and September quarter 2000	48
Australian Capital Territory	<b>25</b>	Hotels, motels, guest houses and serviced apartments, time series	50
	<b>26</b>	Accommodation establishments, September quarter 1999 and September quarter 2000	51
	<b>27</b>	Takings, accommodation establishments, September quarter 1999 and September quarter 2000	52
INTERNATIONAL TOURISM			
Short-term overseas visitors	<b>28</b>	Arrivals, by country of residence	55
	<b>29</b>	Arrivals by country of residence, original, seasonally adjusted and trend, August 1999 to September 2000	56

# TOURIST ACCOMMODATION

## INTRODUCTION

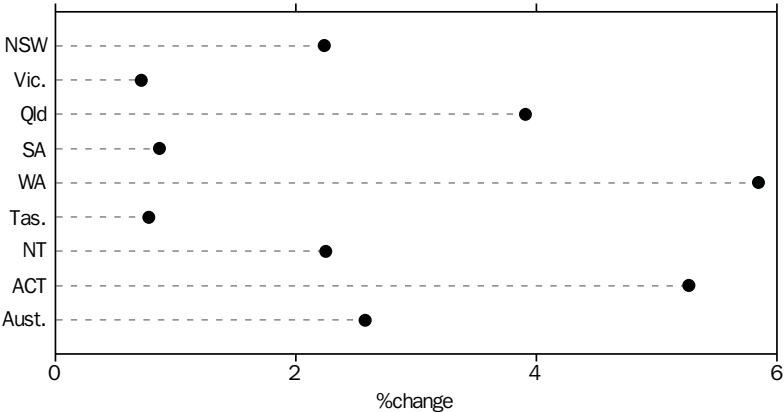
The statistics presented in this section are from the quarterly Survey of Tourist Accommodation (STA). The data presented are for hotels, motels, guest houses and serviced apartments with 15 or more rooms or units.

## AUSTRALIA

**Establishments** The number of accommodation establishments increased by 3% (96) to reach 3,827 during the 12 months ending the September quarter 2000. Serviced apartments contributed 61% to this growth, licensed hotels 22% and motels and guest houses 17%. The increase during this period in the number of serviced apartments of 10% (to 641), was three times greater than the percentage increase for all establishments. Queensland contributed 53% of the growth in serviced apartments since the September quarter 1999 with New South Wales contributing 19%.

Western Australia recorded the largest percentage growth in establishments during the 12 months to the September quarter 2000 of 6% to reach 326. The strongest contributors in absolute terms to the 96 new establishments were Queensland (36), New South Wales (29), and Western Australia (18).

NUMBER OF ESTABLISHMENTS—Sep qtr 1999–Sep qtr 2000



**Guest rooms** The number of guest rooms increased by 4%, or 8,239 since the September quarter 1999 to be 195,079. Licensed hotels (53% or 4,342) and serviced apartments (50% or 4,086) accounted for all the increase while motels and guest houses declined by 189 guest rooms.

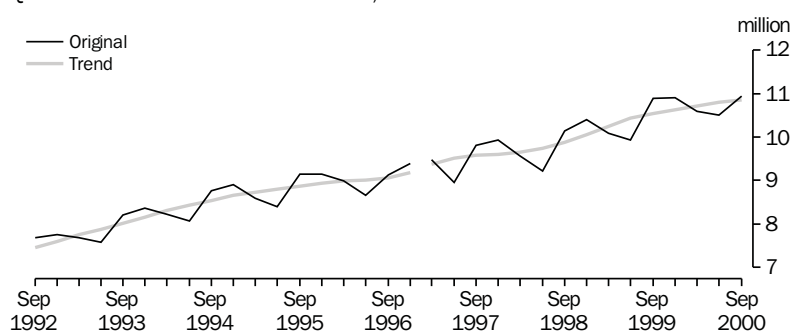
Over the 12 months to the September quarter 2000, the average number of guest rooms per establishment rose to 51. The Australian Capital Territory (84) and the Northern Territory (69) had the largest average number of rooms per establishment.

## Room nights occupied

Room nights occupied were 10.4 million in original terms during the September quarter 2000, an increase of 1% (53,000) compared to the same period last year. Average nightly rooms occupied per establishment decreased 2% to 30.

In trend terms, there has been a continuing upward movement of quarterly room nights occupied from 7.0 million in the September quarter 1992 to 10.4 million in the most recent September quarter. The trend estimate during the September quarter 2000 increased 3% over the previous year, and by 1% on the June quarter 2000.

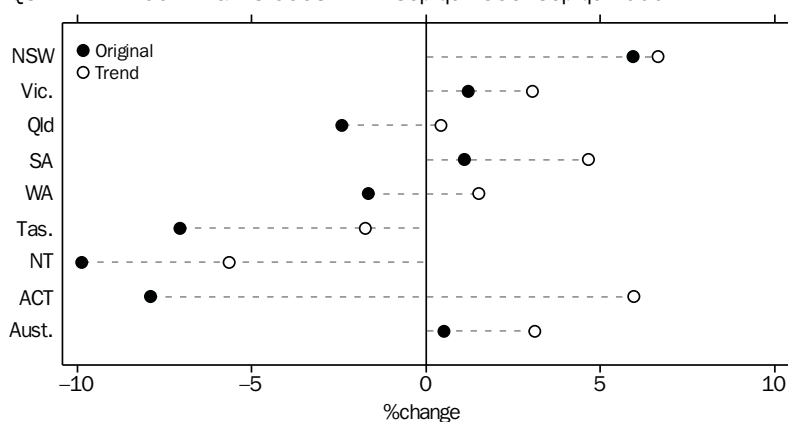
QUARTERLY ROOM NIGHTS OCCUPIED, Aust



Notes: There is a break in series between December quarter 1996 and March quarter 1997 because of scope changes to STA. Refer to Explanatory Notes, paragraphs 3 to 7.

Between the September quarters of 1999 and 2000, New South Wales showed the strongest relative and absolute growths for room nights occupied, up 6% and 198,300 in original terms and 7% and 220,000 in trend terms. The Northern Territory, the Australian Capital Territory, Tasmania, Queensland and Western Australia all reflected negative growth in original terms (down 10%, 8%, 7%, 2% and 2% respectively). In trend terms, the Northern Territory (6%) and Tasmania (2%) showed a decrease during the same period.

QUARTERLY ROOM NIGHTS OCCUPIED—Sep qtr 1999—Sep qtr 2000

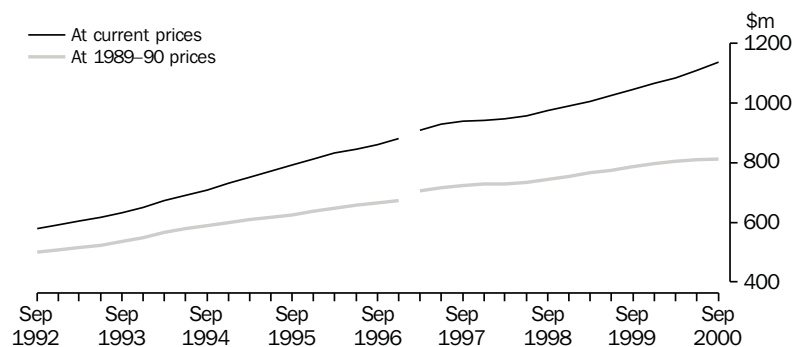




**Guests** There were 1.8 nightly guests per occupied room during the September quarters 1999 and 2000. The number was higher for serviced apartments at 2.2, lower for licensed hotels at 1.6 and the same for motels and guest houses at 1.8. During the September quarter 2000, the average length of stay by guests was 2.3 days, up 0.1 on the previous September quarter. Guests stayed longer in serviced apartments (3.9 days), than in licensed hotels (2.5 days) and motels and guest houses (1.8 days).

**Takings from accommodation** The September quarter 2000 takings of \$1,302.2 million in original terms, is an increase of 21% on the September quarter 1999 and 25% on the June quarter 2000. This large increase can be attributed to the Olympic Games and in part to The New Tax System that was introduced on 1 July 2000. The trend estimate at current prices for takings in the September quarter 2000 (with the Olympic Games irregular effect removed) of \$1,137.7 million, continues to grow at a steady pace.

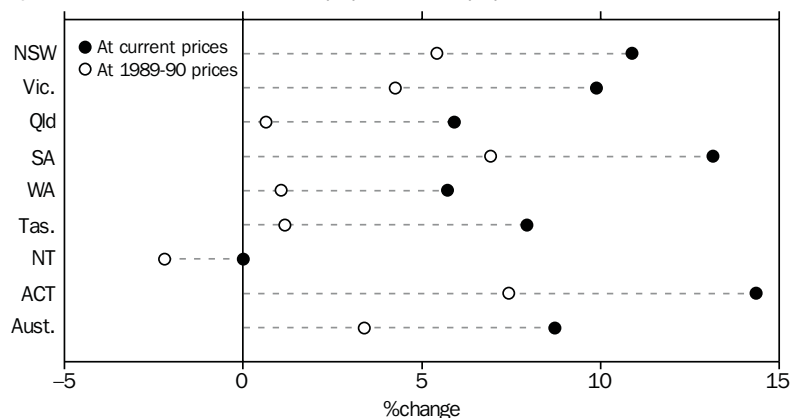
QUARTERLY TAKINGS FROM ACCOMMODATION, Aust: **Trend**



Note: There is a break in series between December quarter 1996 and March quarter 1997 because of scope changes to the STA. Refer to Explanatory Notes, paragraphs 3-7.

All States and the Australian Capital Territory recorded growth in quarterly takings during the September quarter 2000 compared with the same period a year ago. The Australian Capital Territory had the greatest relative growth for quarterly takings in trend terms in this period (up 14% at current prices and 7% at constant prices).

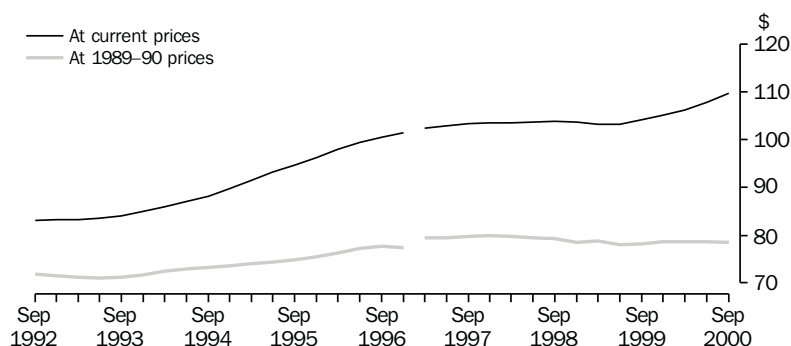
QUARTERLY TAKINGS: **Trend**—Sep qtr 1999—Sep qtr 2000



Average takings per room  
night occupied

In the September quarter 2000, the trend series for average takings per room night occupied in current price terms increased to a record high of \$110, up 5% (\$6) on the same period last year and 2% (\$2) on the June quarter 2000. The constant price series remained at \$79.

AVERAGE TAKINGS PER ROOM NIGHT OCCUPIED, Aust: Trend



Note: There is a break in series between December quarter 1996 and March quarter 1997 because of scope changes to the STA. Refer to Explanatory Notes, paragraphs 3-7.

The trend estimate in current price terms for the September quarter 2000 shows that all States and Territories increased their average takings per room night occupied compared to the September quarter 1999. Victoria has the highest average takings per room night occupied at \$122, while South Australia and Tasmania had the lowest levels of \$95 and \$94 respectively.

# 1

## HOTELS, MOTELS, GUEST HOUSES AND SERVICED APARTMENTS — AUST.(a)

	Room nights occupied(b)			Takings at current prices(b)			Takings at average 1989-90 prices(c)		
	Original	Seasonally adjusted	Trend	Original	Seasonally adjusted	Trend	Original	Seasonally adjusted	Trend
	'000	'000	'000	\$m	\$m	\$m	\$m	\$m	\$m
<b>1990</b>	25 755.7	25 769.4	25 685.7	2 138.3	2 138.9	2 125.6	1 924.4	1 925.9	1 916.6
<b>1991</b>	26 417.8	26 389.4	26 365.7	2 211.7	2 208.4	2 206.9	1 929.0	1 926.6	1 924.3
<b>1992</b>	27 736.6	27 645.2	27 687.3	2 307.3	2 299.4	2 306.3	1 993.5	1 987.0	1 992.0
<b>1993</b>	29 834.6	29 833.7	29 798.5	2 503.1	2 502.5	2 502.3	2 124.0	2 123.5	2 123.9
<b>1994</b>	31 948.5	31 953.2	31 935.1	2 807.9	2 807.2	2 804.0	2 336.5	2 336.2	2 332.3
<b>1995</b>	33 278.7	33 301.7	33 328.5	3 124.9	3 125.9	3 130.9	2 482.9	2 484.1	2 489.3
<b>1996</b>	34 171.6	34 181.6	34 248.1	3 412.9	3 413.7	3 420.9	2 641.1	2 641.5	2 641.2
<b>1997</b>	36 182.8	36 174.0	36 064.4	3 727.8	3 730.1	3 717.8	2 876.0	2 877.6	2 873.3
<b>1998</b>	37 324.5	37 326.2	37 317.5	3 877.8	3 876.6	3 871.2	2 963.4	2 961.5	2 956.3
<b>1999</b>	39 822.3	39 849.2	39 852.7	4 139.7	4 143.2	4 142.6	3 120.6	3 123.0	3 125.9
<b>1999</b>									
Jun qtr	9 427.3	9 941.4	9 933.1	946.4	1 018.0	1 024.9	716.8	771.7	775.3
Sep qtr	10 395.6	10 143.5	10 046.6	1 077.8	1 056.9	1 046.4	809.5	793.0	786.1
Dec qtr	10 413.6	10 102.9	10 134.8	1 112.4	1 070.0	1 065.8	831.7	799.2	797.2
<b>2000</b>									
Mar qtr	10 088.1	10 046.5	10 211.4	1 088.3	1 069.1	1 085.1	806.1	792.7	803.7
Jun qtr	9 999.9	10 550.3	10 296.0	1 039.5	1 118.3	1 109.6	763.9	822.5	809.0
Sep qtr	10 448.6	10 207.0	10 359.0	1 302.2	1 280.9	1 137.7	921.8	905.5	812.8

(a) There is a break in series between December quarter 1996 and March quarter 1997 because of scope changes in the STA. Refer to Explanatory Notes, paragraphs 3 to 7.

(b) Australian quarterly seasonally adjusted and trend estimates are the sum of the relevant State and Territory estimates.

(c) The deflator used to revalue current price data in this table is the Consumer Price Index. See paragraphs 9 to 11 of the Explanatory Notes.

## 2

### ACCOMMODATION ESTABLISHMENTS — AUST.

				Star grading							
	Licensed hotels with facilities	Motels and guest houses	Serviced apartments	1	2	3	4	5	Ungraded	Total	
ESTABLISHMENTS AND CAPACITY											
	no.	no.	no.	no.	no.	no.	no.	no.	no.	no.	
Sep qtr 1999											
Establishments	753	2 396	582	71	556	1 866	727	75	436	3 731	
Guest rooms	72 265	85 267	29 308	2 124	16 092	71 195	61 490	18 642	17 297	186 840	
Rooms per establishment	96	36	50	30	29	38	85	249	40	50	
Sep qtr 2000											
Establishments	774	2 412	641	60	473	1 859	862	93	480	3 827	
Guest rooms	76 607	85 078	33 394	1 969	13 593	71 543	67 960	22 402	17 612	195 079	
Rooms per establishment	99	35	52	33	29	38	79	241	37	51	
AVERAGE NIGHTLY ROOMS OCCUPIED PER ESTABLISHMENT											
	no.	no.	no.	no.	no.	no.	no.	no.	no.	no.	
1999											
Sep qtr	62.3	20.0	32.2	13.8	13.7	22.0	58.0	175.0	19.9	30.5	
2000											
Jul	60.1	18.3	30.8	14.8	12.6	20.3	49.8	154.6	17.7	28.9	
Aug	62.6	18.4	31.0	15.4	12.5	20.5	50.5	166.3	18.0	29.4	
Sep	65.3	19.5	33.4	15.3	13.6	22.3	52.4	169.8	19.2	31.1	
Sep qtr	62.7	18.7	31.7	15.2	12.9	21.0	50.9	163.5	18.3	29.8	
AVERAGE NIGHTLY GUESTS PER OCCUPIED ROOM											
	no.	no.	no.	no.	no.	no.	no.	no.	no.	no.	
1999											
Sep qtr	1.7	1.8	2.2	2.2	1.8	1.8	1.8	1.6	1.8	1.8	
2000											
Jul	1.7	1.8	2.2	2.2	1.8	1.9	1.8	1.6	1.9	1.8	
Aug	1.6	1.7	2.1	2.2	1.7	1.8	1.7	1.6	1.9	1.7	
Sep	1.6	1.8	2.2	2.0	1.8	1.9	1.8	1.6	1.9	1.8	
Sep qtr	1.6	1.8	2.2	2.2	1.8	1.8	1.8	1.6	1.9	1.8	
AVERAGE LENGTH OF STAY											
	days	days	days	days	days	days	days	days	days	days	
1999											
Sep qtr	2.3	1.8	3.9	2.4	1.7	2.0	2.4	2.8	2.6	2.2	
2000											
Jul	2.3	1.8	3.8	2.2	1.7	2.0	2.5	2.5	2.6	2.3	
Aug	2.4	1.8	3.9	2.2	1.7	2.0	2.5	2.7	2.6	2.3	
Sep	2.7	1.9	3.9	2.1	1.7	2.1	2.7	3.1	2.8	2.4	
Sep qtr	2.5	1.8	3.9	2.2	1.7	2.1	2.6	2.8	2.7	2.3	

# 3

## TAKINGS, ACCOMMODATION ESTABLISHMENTS — AUST.

			<i>Star grading</i>							
	<i>Licensed hotels with facilities</i>	<i>Motels and guest houses</i>	<i>Serviced apartments</i>	1	2	3	4	5	<i>Ungraded</i>	<i>Total</i>
TAKINGS FROM ACCOMMODATION										
	\$'000	\$'000	\$'000	\$'000	\$'000	\$'000	\$'000	\$'000	\$'000	\$'000
<b>1999</b>										
Sep qtr	537 904	356 212	183 666	6 520	44 114	304 518	448 254	202 498	71 877	1 077 782
<b>2000</b>										
Jul	193 040	121 685	71 377	2 336	12 241	104 403	162 154	79 741	25 227	386 102
Aug	205 674	122 176	70 873	2 466	12 102	104 956	164 760	86 575	27 863	398 722
Sep	282 500	139 443	95 392	2 302	13 602	134 405	209 142	123 396	34 487	517 334
Sep qtr	681 214	383 303	237 641	7 104	37 945	343 765	536 056	289 711	87 577	1 302 158
AVERAGE TAKINGS PER ESTABLISHMENT										
	\$'000	\$'000	\$'000	\$'000	\$'000	\$'000	\$'000	\$'000	\$'000	\$'000
<b>1999</b>										
Sep qtr	714.3	148.7	315.6	91.8	79.3	163.2	616.6	2 700.0	164.9	288.9
<b>2000</b>										
Jul	249.4	50.5	111.4	38.9	25.9	56.2	188.1	857.4	52.6	100.9
Aug	265.7	50.7	110.6	41.1	25.6	56.5	191.1	930.9	58.0	104.2
Sep	365.0	57.8	148.8	38.4	28.8	72.3	242.6	1 326.8	71.8	135.2
Sep qtr	880.1	158.9	370.7	118.4	80.2	184.9	621.9	3 115.2	182.5	340.3
AVERAGE TAKINGS PER ROOM NIGHT OCCUPIED										
	\$	\$	\$	\$	\$	\$	\$	\$	\$	\$
<b>1999</b>										
Sep qtr	126	81	108	72	63	81	116	169	94	104
<b>2000</b>										
Jul	134	89	118	85	66	89	122	179	99	113
Aug	137	89	116	87	66	89	122	181	108	115
Sep	187	99	149	85	71	108	155	261	125	145
Sep qtr	153	93	128	86	68	96	133	207	111	125
AVERAGE TAKINGS PER ROOM NIGHT AVAILABLE										
	\$	\$	\$	\$	\$	\$	\$	\$	\$	\$
<b>1999</b>										
Sep qtr	82	46	69	33	30	47	79	119	47	63
<b>2000</b>										
Jul	82	46	70	38	29	47	77	115	48	64
Aug	87	47	69	41	29	48	78	125	53	66
Sep	123	55	95	40	34	63	103	184	65	89
Sep qtr	97	49	78	40	30	52	86	141	55	73
AVERAGE TAKINGS PER GUEST NIGHT										
	\$	\$	\$	\$	\$	\$	\$	\$	\$	\$
<b>1999</b>										
Sep qtr	76	46	50	33	35	44	65	103	51	58
<b>2000</b>										
Jul	81	50	53	38	36	48	69	110	52	63
Aug	85	53	55	39	38	50	72	113	58	66
Sep	114	55	67	41	39	58	87	159	67	81
Sep qtr	94	53	59	39	38	52	76	128	59	70

## NEW SOUTH WALES

**Capacity** There were 1,326 accommodation establishments with 15 rooms or more in New South Wales at the end of September 2000, an increase of 29 since September 1999. The overall capacity of the 1,326 establishments rose by 4,759 guest rooms to 65,000, with the highest percent growth occurring in serviced apartments, up 29% and licensed hotels up 15%.

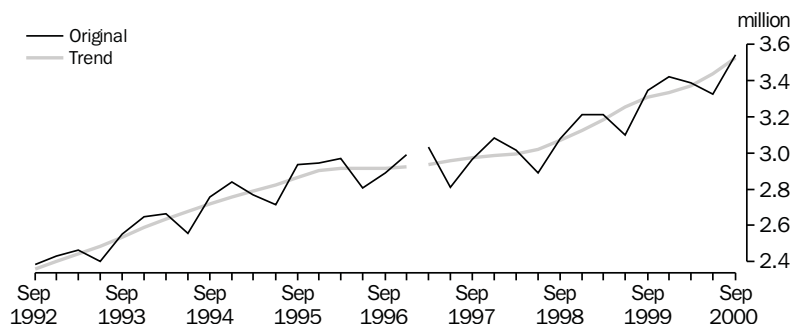
Accommodation establishments in New South Wales had on average 29.3 nightly rooms occupied in the September quarter 2000, up from 28.4 on the previous year. Within the quarter, the highest level of nightly rooms occupied occurred in September with 32.7. Duration of stay varied according to type of accommodation during the September quarter 2000, guests in serviced apartments stayed an average of 3.6 days, those in licensed hotels stayed 2.7 days, while guests in motels and guest houses stayed 1.7 days.

**Takings from accommodation** Total takings from accommodation establishments were \$555.2 million in the September quarter 2000, up 48% on the same period in 1999 and the June quarter 2000. Higher than usual takings largely reflects increased demand and higher tariffs during the Olympic Games in the last half of September. Takings from licensed hotels increased 64%, from \$190 million in the September quarter 1999 to \$311 million in the September quarter 2000 and accounted for 56% of the total takings in this quarter. Serviced apartments recorded an 81% increase to \$79 million with motels and guest houses up 17% to \$166 million.

For the industry as a whole, the average takings for the September quarter 2000 per New South Wales establishment was \$418,700. Average takings rose for all forms of accommodation, the largest increases being 5 star and 3 star establishments with 48% and 38% respectively compared to a year ago. Average takings per room night occupied rose in the September quarter 2000 by \$45 to \$157 compared to the same period in 1999.

**Room nights occupied** The trend estimate of room nights occupied for the September quarter 2000 continued at a steady pace to reach 3.5 million, a 7% increase on the September quarter 1999.

QUARTERLY ROOM NIGHTS OCCUPIED, NSW

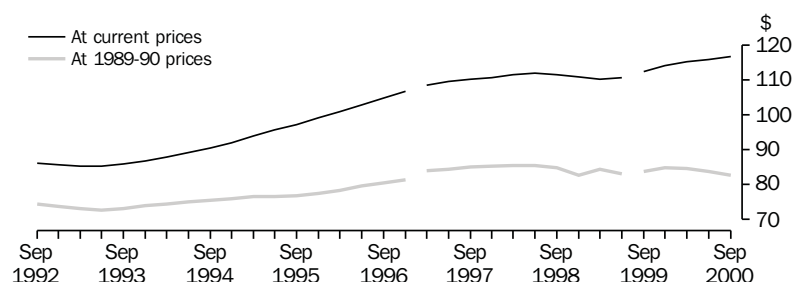


Notes: There is a break in series between December quarter 1996 and March quarter 1997 because of scope changes to STA. Refer to Explanatory Notes, paragraphs 3–7.

Average takings per room  
night occupied

In original terms, average takings per room night occupied increased by 40% in the September quarter 2000 to \$157 compared with the same period last year. When an adjustment is made to remove the irregular effect of the Olympics, the trend estimate series at current prices, increased to \$117, up 4% (\$5) on the September 1999 level. In 1989–90 prices, the estimate has decreased \$1 to \$83 in the same period.

AVERAGE TAKINGS PER ROOM NIGHT OCCUPIED, NSW: Trend



Notes: There are two breaks in series:  
(a) between December quarter 1996 and March quarter 1997 because of scope changes to the STA. Refer to Explanatory Notes, paragraphs 3–7 and  
(b) between June quarter and September quarter 1999 because of a sudden sustained increase in takings from accommodation.

## 4

### HOTELS, MOTELS, GUEST HOUSES AND SERVICED APARTMENTS — NSW(a)

	Room nights occupied(b)			Takings at current prices(b)			Takings at average 1989–90 prices(c)		
	Original	Seasonally adjusted	Trend	Original	Seasonally adjusted	Trend	Original	Seasonally adjusted	Trend
	'000	'000	'000	\$m	\$m	\$m	\$m	\$m	\$m
<b>1990</b>	8 878.2	8 882.7	8 894.5	818.8	819.9	818.2	735.4	736.5	735.3
<b>1991</b>	8 928.1	8 920.0	8 905.2	798.6	798.3	796.5	696.5	696.3	694.7
<b>1992</b>	9 389.7	9 356.9	9 376.0	812.6	810.1	811.9	702.7	700.6	701.8
<b>1993</b>	10 065.0	10 061.6	10 050.9	863.7	863.4	863.4	736.1	735.9	736.2
<b>1994</b>	10 817.2	10 808.7	10 788.3	972.9	972.2	970.4	814.4	813.9	812.1
<b>1995</b>	11 363.4	11 358.2	11 385.3	1 097.1	1 097.0	1 099.2	873.1	873.2	875.2
<b>1996</b>	11 654.7	11 672.9	11 667.1	1 209.5	1 211.6	1 212.2	933.1	934.7	933.5
<b>1997</b>	11 887.0	11 871.7	11 854.7	1 303.6	1 305.2	1 302.6	1 003.5	1 004.8	1 004.2
<b>1998</b>	12 195.4	12 201.9	12 207.7	1 361.2	1 361.9	1 361.4	1 035.5	1 036.0	1 033.1
<b>1999</b>	13 081.1	13 102.6	13 079.0	1 463.7	1 466.4	1 463.5	1 095.0	1 097.2	1 098.3
<b>1999</b>									
Jun qtr	3 099.8	3 227.5	3 253.8	332.8	352.8	360.0	250.2	265.3	270.3
Sep qtr	3 345.0	3 350.1	3 307.3	375.0	378.0	371.8	279.4	281.6	276.8
Dec qtr	3 423.1	3 349.7	3 335.4	395.2	384.5	380.8	293.1	285.2	282.7
<b>2000</b>									
Mar qtr	3 388.1	3 306.9	3 371.8	397.9	382.3	388.4	292.6	281.1	285.4
Jun qtr	3 323.9	3 462.9	3 438.9	374.0	396.9	398.5	272.4	289.0	288.0
Sep qtr	3 543.3	3 546.9	3 527.3	555.2	558.9	412.2	390.2	392.8	291.8

(a) There is a break in series between December quarter 1996 and March quarter 1997 because of scope changes in the STA. Refer to Explanatory Notes, paragraphs 3 to 7.

(b) For presentation purposes the quarterly seasonally adjusted estimates for room nights occupied and takings at current prices are derived by summing the relevant monthly figures, while the quarterly trend estimates are derived from these quarterly seasonally adjusted figures.

(c) The deflator used to revalue current price data in this table is the Sydney All Groups Consumer Price Index. See paragraphs 9 to 11 of the Explanatory Notes.

				Star grading						
	Licensed hotels with facilities	Motels and guest houses	Serviced apart- ments	1	2	3	4	5	Ungraded	Total
ESTABLISHMENTS AND CAPACITY										
	no.	no.	no.	no.	no.	no.	no.	no.	no.	no.
Sep qtr 1999										
Establishments	178	997	122	35	208	664	187	18	185	1 297
Guest rooms	21 144	33 422	5 675	1 202	5 975	23 333	17 489	4 947	7 295	60 241
Rooms per establishment	119	34	47	34	29	35	94	275	39	46
Sep qtr 2000										
Establishments	191	1 002	133	28	177	698	213	23	187	1 326
Guest rooms	24 241	33 432	7 327	1 077	4 939	25 979	19 540	6 226	7 239	65 000
Rooms per establishment	127	33	55	38	28	37	92	271	39	49
AVERAGE NIGHTLY ROOMS OCCUPIED PER ESTABLISHMENT										
	no.	no.	no.	no.	no.	no.	no.	no.	no.	no.
1999										
Sep qtr	82.3	18.6	29.5	17.2	13.9	20.3	66.6	200.9	20.3	28.4
2000										
Jul	81.4	17.1	31.1	19.4	12.5	20.0	60.0	164.4	18.8	27.8
Aug	80.9	16.9	30.0	19.6	12.4	19.6	58.2	170.0	19.2	27.4
Sep	98.9	19.4	37.9	18.6	14.5	23.6	68.5	219.9	22.2	32.7
Sep qtr	87.0	17.8	33.0	19.2	13.1	21.1	62.2	184.4	20.1	29.3
AVERAGE NIGHTLY GUESTS PER OCCUPIED ROOM										
	no.	no.	no.	no.	no.	no.	no.	no.	no.	no.
1999										
Sep qtr	1.6	1.8	2.0	2.5	1.8	1.8	1.6	1.5	1.9	1.7
2000										
Jul	1.6	1.8	2.1	2.6	1.9	1.8	1.7	1.5	2.0	1.8
Aug	1.6	1.7	1.9	2.6	1.8	1.7	1.6	1.4	2.0	1.7
Sep	1.5	1.8	1.8	2.3	1.8	1.8	1.6	1.4	1.8	1.7
Sep qtr	1.6	1.8	1.9	2.5	1.8	1.8	1.6	1.4	1.9	1.7
AVERAGE LENGTH OF STAY										
	days	days	days	days	days	days	days	days	days	days
1999										
Sep qtr	2.4	1.7	3.4	2.9	1.7	1.8	2.1	3.0	2.5	2.0
2000										
Jul	2.4	1.7	3.3	2.5	1.6	1.9	2.3	2.5	2.5	2.1
Aug	2.5	1.7	3.3	2.5	1.6	1.9	2.2	2.6	2.5	2.1
Sep	3.5	1.8	4.1	2.4	1.6	2.1	2.8	3.9	2.8	2.5
Sep qtr	2.7	1.7	3.6	2.5	1.6	2.0	2.4	2.9	2.6	2.2

## 6

## TAKINGS, ACCOMMODATION ESTABLISHMENTS — NSW

	Licensed hotels with facilities	Motels and guest houses	Serviced apart- ments	Star grading						
				1	2	3	4	5	Ungraded	Total
				TAKINGS FROM ACCOMMODATION						
	\$'000	\$'000	\$'000	\$'000	\$'000	\$'000	\$'000	\$'000	\$'000	\$'000
1999										
Sep qtr	189 972	141 670	43 372	4 879	16 996	105 597	147 543	65 371	34 629	375 014
2000										
Jul	73 819	48 398	18 433	1 692	4 619	41 227	54 610	27 125	11 377	140 650
Aug	76 364	48 192	18 492	1 793	4 652	40 784	53 956	28 152	13 711	143 048
Sep	160 611	69 342	41 592	1 617	6 015	71 601	103 438	68 299	20 575	271 546
Sep qtr	310 794	165 932	78 518	5 103	15 286	153 612	212 004	123 576	45 663	555 244
AVERAGE TAKINGS PER ESTABLISHMENT										
	\$'000	\$'000	\$'000	\$'000	\$'000	\$'000	\$'000	\$'000	\$'000	\$'000
1999										
Sep qtr	1 067.3	142.1	355.5	139.4	81.7	159.0	789.0	3 631.7	187.2	289.1
2000										
Jul	386.5	48.3	138.6	60.4	26.1	59.1	256.4	1 179.3	60.8	106.1
Aug	399.8	48.1	139.0	64.0	26.3	58.4	253.3	1 224.0	73.3	107.9
Sep	840.9	69.2	312.7	57.8	34.0	102.6	485.6	2 969.5	110.0	204.8
Sep qtr	1 627.2	165.6	590.4	182.2	86.4	220.1	995.3	5 372.9	244.2	418.7
AVERAGE TAKINGS PER ROOM NIGHT OCCUPIED										
	\$	\$	\$	\$	\$	\$	\$	\$	\$	\$
1999										
Sep qtr	145	83	134	88	64	86	129	202	107	112
2000										
Jul	155	92	150	101	67	96	139	231	113	125
Aug	160	93	155	105	69	96	140	232	133	128
Sep	284	119	275	103	79	145	236	450	166	209
Sep qtr	205	102	200	103	72	114	175	317	139	157
AVERAGE TAKINGS PER ROOM NIGHT AVAILABLE										
	\$	\$	\$	\$	\$	\$	\$	\$	\$	\$
1999										
Sep qtr	100	46	85	44	31	49	92	148	55	69
2000										
Jul	99	47	85	51	30	51	91	141	55	71
Aug	102	47	85	54	30	51	89	146	66	72
Sep	221	69	189	50	41	92	177	366	95	140
Sep qtr	140	54	120	52	34	65	118	216	72	94
AVERAGE TAKINGS PER GUEST NIGHT										
	\$	\$	\$	\$	\$	\$	\$	\$	\$	\$
1999										
Sep qtr	90	46	67	35	35	48	80	133	55	64
2000										
Jul	97	50	72	39	36	53	84	155	57	71
Aug	102	54	81	41	38	56	90	160	68	77
Sep	188	66	150	45	43	81	152	319	91	124
Sep qtr	131	57	103	41	39	64	110	219	73	92



## VICTORIA

**Capacity** At the end of the September quarter 2000, Victoria had 703 accommodation establishments with 15 rooms or more, five more than at the same time in 1999. These establishments provided 31,158 guest rooms, a 1% gain on 12 months ago. This increase in capacity was due to a 5% rise in both licensed hotels (540 additional rooms) and serviced apartments (187 rooms) but offset by a decline of 3% (503 rooms) in motels and guest houses.

The increase in supply was exceeded slightly by the demand for accommodation, with the average nightly rooms occupied per establishment rising slightly to 24.9 in the September quarter 2000 from 24.8 a year ago. Licensed hotels were the only accommodation type to reflect this increase in demand, rising from 55.8 to 58.2 average nightly rooms occupied over this period.

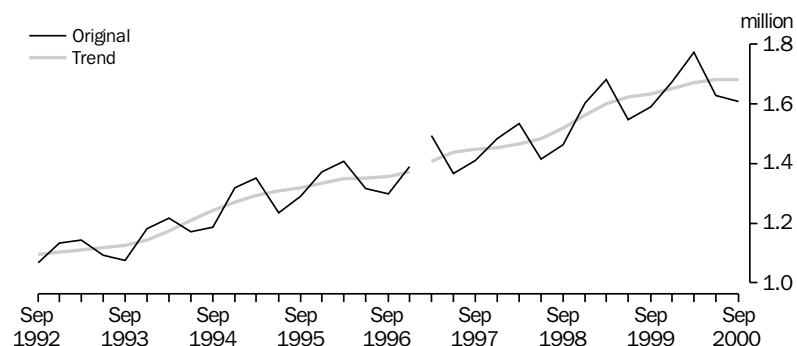
Average nightly guests per occupied room remained at 1.7 during the September quarter 2000, the same level as a year ago.

**Takings from accommodation** Establishments in Victoria earned a 10% increase to \$202.9 million from accommodation in the September quarter 2000, showing gains across all types of accommodation. Serviced apartments recorded the strongest growth in takings, up 18% with licensed hotels up 13% and motels and guest houses up 3%. Licensed hotels accounted for 50% of the takings in the September quarter 2000 while motels and guest houses accounted for 32%.

Average takings per establishment rose 9% in the September quarter 2000 compared to the same period in 1999, with average takings per guest night increasing by \$6 to \$76 for the same period.

**Room nights occupied** Both the original and trend estimate series of room nights occupied in Victoria increased in the September quarter 2000 compared to a year ago but both decreased compared to the June quarter 2000.

QUARTERLY ROOM NIGHTS OCCUPIED, Vic

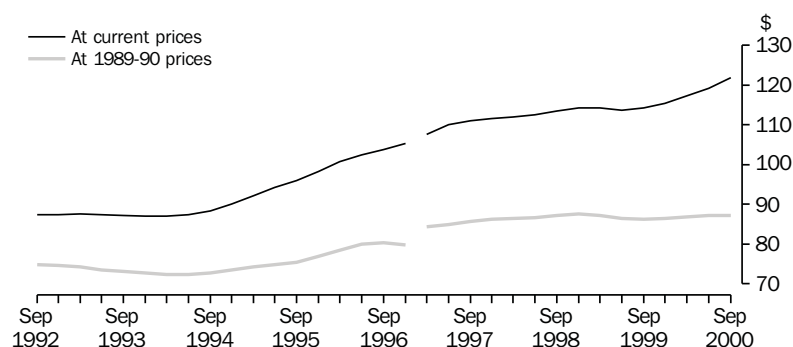


Note: There is a break in series between December quarter 1996 and March quarter 1997 because of scope changes to STA. Refer to Explanatory Notes, paragraphs 3-7.

Average takings per room  
night occupied

Victoria's trend estimate of average takings per room night occupied, at current prices, increased by 7% to \$122 during the September quarter 2000 compared to a year ago and by 2% on the June quarter 2000. The estimate in 1989-90 prices of \$87 for the September quarter 2000 increased by \$1 during the year and remained the same as the June quarter 2000 level.

AVERAGE TAKINGS PER ROOM NIGHT OCCUPIED, Vic: Trend



Note: There is a break in series between December quarter 1996 and March quarter 1997 because of scope changes to STA. Refer to Explanatory Notes, paragraphs 3-7.

## 7

### HOTELS, MOTELS, GUEST HOUSES AND SERVICED APARTMENTS — VIC.(a)

	Room nights occupied(b)			Takings at current prices(b)			Takings at average 1989-90 prices(c)		
	Original	Seasonally adjusted	Trend	Original	Seasonally adjusted	Trend	Original	Seasonally adjusted	Trend
	'000	'000	'000	\$m	\$m	\$m	\$m	\$m	\$m
<b>1990</b>	4 161.6	4 166.0	4 156.3	361.5	361.9	360.2	323.6	324.0	322.7
<b>1991</b>	4 209.1	4 212.1	4 209.7	369.1	369.4	370.2	318.4	318.8	319.2
<b>1992</b>	4 367.6	4 359.1	4 366.0	382.5	382.0	382.5	327.3	326.9	327.1
<b>1993</b>	4 490.5	4 497.3	4 498.0	391.6	392.8	392.7	328.8	329.8	329.9
<b>1994</b>	4 890.8	4 894.7	4 894.5	432.5	432.7	431.8	356.8	357.0	356.1
<b>1995</b>	5 248.4	5 259.1	5 255.2	497.7	499.2	500.0	394.0	395.2	396.3
<b>1996</b>	5 411.1	5 409.0	5 430.5	555.7	556.4	559.7	431.2	431.7	432.4
<b>1997</b>	5 754.2	5 763.0	5 746.1	634.9	635.8	632.7	490.3	491.0	490.2
<b>1998</b>	6 016.7	6 028.2	6 029.1	681.0	682.2	681.9	523.9	524.8	524.6
<b>1999</b>	6 488.5	6 499.0	6 505.4	741.5	743.0	744.2	561.5	562.7	563.6
<b>1999</b>									
Jun qtr	1 545.6	1 619.1	1 622.5	170.1	184.0	184.5	129.6	140.2	140.4
Sep qtr	1 589.5	1 638.6	1 631.9	184.1	186.0	186.4	138.8	140.2	140.7
Dec qtr	1 672.7	1 632.4	1 650.5	191.6	189.1	190.4	143.6	141.7	142.8
<b>2000</b>									
Mar qtr	1 773.4	1 675.7	1 671.1	213.0	197.5	195.8	158.0	146.5	145.3
Jun qtr	1 628.9	1 706.9	1 681.8	185.3	200.6	200.7	136.6	147.8	146.6
Sep qtr	1 608.7	1 655.7	1 681.6	202.9	204.3	204.8	144.0	145.0	146.7

(a) There is a break in series between December quarter 1996 and March quarter 1997 because of scope changes in the STA. Refer to Explanatory Notes, paragraphs 3 to 7.

(b) For presentation purposes the quarterly seasonally adjusted estimates for room nights occupied and takings at current prices are derived by summing the relevant monthly figures, while the quarterly trend estimates are derived from these quarterly seasonally adjusted figures.

(c) The deflator used to revalue current price data in this table is the Melbourne All Groups Consumer Price Index. See paragraphs 9 to 11 of the Explanatory Notes.

	Accommodation establishments			Star grading						
	Licensed hotels with facilities	Motels and guest houses	Serviced apartments	1	2	3	4	5	Ungraded	Total
ESTABLISHMENTS AND CAPACITY										
	no.	no.	no.	no.	no.	no.	no.	no.	no.	no.
Sep qtr 1999										
Establishments	123	503	72	11	92	388	152	10	45	698
Guest rooms	10 831	16 158	3 945	240	2 466	12 506	10 921	2 978	1 823	30 934
Rooms per establishment	88	32	55	22	27	32	72	298	41	44
Sep qtr 2000										
Establishments	126	500	77	8	75	372	188	16	44	703
Guest rooms	11 371	15 655	4 132	270	2 000	11 648	12 124	3 577	1 539	31 158
Rooms per establishment	90	31	54	34	27	31	64	224	35	44
AVERAGE NIGHTLY ROOMS OCCUPIED PER ESTABLISHMENT										
	no.	no.	no.	no.	no.	no.	no.	no.	no.	no.
1999										
Sep qtr	55.8	15.4	37.5	7.0	9.1	16.0	47.7	207.5	19.0	24.8
2000										
Jul	59.3	14.7	38.3	12.2	8.8	15.1	42.6	155.4	19.9	25.2
Aug	59.9	14.4	37.3	12.0	8.7	14.8	42.0	163.6	19.1	25.1
Sep	55.5	14.8	36.2	15.6	9.8	15.3	39.2	150.8	18.1	24.4
Sep qtr	58.2	14.6	37.3	13.2	9.1	15.1	41.3	156.7	19.1	24.9
AVERAGE NIGHTLY GUESTS PER OCCUPIED ROOM										
	no.	no.	no.	no.	no.	no.	no.	no.	no.	no.
1999										
Sep qtr	1.5	1.7	1.8	1.6	1.9	1.8	1.6	1.4	1.7	1.7
2000										
Jul	1.5	1.8	1.9	1.3	1.9	1.9	1.6	1.4	1.8	1.7
Aug	1.5	1.7	1.8	1.3	1.9	1.8	1.5	1.4	1.8	1.6
Sep	1.5	1.8	1.8	1.4	1.8	1.9	1.6	1.4	1.8	1.7
Sep qtr	1.5	1.7	1.8	1.3	1.9	1.8	1.6	1.4	1.8	1.7
AVERAGE LENGTH OF STAY										
	days	days	days	days	days	days	days	days	days	days
1999										
Sep qtr	2.1	1.8	3.4	1.7	1.6	1.9	2.1	2.4	3.1	2.1
2000										
Jul	2.1	1.8	3.0	1.3	1.7	2.0	2.1	2.3	2.8	2.1
Aug	2.1	1.8	3.1	1.3	1.7	1.9	2.1	2.3	2.8	2.1
Sep	2.2	1.7	3.0	1.4	1.7	1.9	2.1	2.4	2.7	2.1
Sep qtr	2.2	1.7	3.1	1.3	1.7	2.0	2.1	2.3	2.8	2.1

				Star grading							
	Licensed hotels with facilities	Motels and guest houses	Serviced apart- ments	1	2	3	4	5	Ungraded	Total	
TAKINGS FROM ACCOMMODATION											
	\$'000	\$'000	\$'000	\$'000	\$'000	\$'000	\$'000	\$'000	\$'000	\$'000	
1999											
Sep qtr	89 198	62 927	31 969	399	4 820	48 721	82 939	37 470	9 746	184 094	
2000											
Jul	33 799	22 126	13 145	190	1 434	16 314	32 160	15 314	3 658	69 070	
Aug	34 657	21 860	12 693	167	1 450	16 078	31 962	16 014	3 538	69 209	
Sep	32 149	20 515	11 971	225	1 516	15 069	28 665	15 845	3 314	64 634	
Sep qtr	100 605	64 501	37 808	582	4 400	47 460	92 788	47 174	10 510	202 914	
AVERAGE TAKINGS PER ESTABLISHMENT											
	\$'000	\$'000	\$'000	\$'000	\$'000	\$'000	\$'000	\$'000	\$'000	\$'000	
1999											
Sep qtr	725.2	125.1	444.0	36.3	52.4	125.6	545.7	3 747.0	216.6	263.7	
2000											
Jul	268.2	44.3	170.7	23.7	19.1	43.9	171.1	957.2	83.1	98.3	
Aug	275.1	43.7	164.8	20.9	19.3	43.2	170.0	1 000.9	80.4	98.4	
Sep	255.1	41.0	155.5	28.2	20.2	40.5	152.5	990.3	75.3	91.9	
Sep qtr	798.5	129.0	491.0	72.7	58.7	127.6	493.6	2 948.3	238.9	288.6	
AVERAGE TAKINGS PER ROOM NIGHT OCCUPIED											
	\$	\$	\$	\$	\$	\$	\$	\$	\$	\$	
1999											
Sep qtr	142	88	129	56	63	85	125	196	127	116	
2000											
Jul	146	98	144	63	70	94	130	199	136	126	
Aug	149	98	142	62	72	94	131	197	137	127	
Sep	154	93	143	67	69	88	130	219	138	126	
Sep qtr	149	96	143	64	70	92	130	205	137	126	
AVERAGE TAKINGS PER ROOM NIGHT AVAILABLE											
	\$	\$	\$	\$	\$	\$	\$	\$	\$	\$	
1999											
Sep qtr	90	42	88	18	21	42	83	137	60	65	
2000											
Jul	96	46	103	23	23	45	86	138	78	72	
Aug	99	45	99	22	23	45	85	144	75	72	
Sep	95	44	97	31	25	43	79	148	72	69	
Sep qtr	96	45	100	25	24	44	83	143	75	71	
AVERAGE TAKINGS PER GUEST NIGHT											
	\$	\$	\$	\$	\$	\$	\$	\$	\$	\$	
1999											
Sep qtr	94	51	70	34	34	47	79	136	74	70	
2000											
Jul	97	56	76	49	38	50	82	139	76	75	
Aug	99	59	81	46	38	53	86	140	77	79	
Sep	101	52	78	49	38	47	79	158	79	75	
Sep qtr	99	55	78	48	38	50	82	145	77	76	

## QUEENSLAND

**Capacity** In Queensland at the end of the September quarter 2000, there were 958 accommodation establishments with 15 rooms or more providing 52,555 guest rooms. This was an increase of 36 establishments (4%) and 1,401 guest rooms (3%) since the same period last year. While the number of guest rooms offered by all accommodation types increased, serviced apartments predominated with 96%. Licensed hotels provided 39% of all guest rooms at the end of September 2000.

The average number of rooms per establishment varied across accommodation types. In the September quarter 2000, the number of rooms in licensed hotels averaged 120, whilst serviced apartments averaged 50 and motels and guest houses averaged 36 guest rooms.

The average nightly rooms occupied per establishment in the September quarter 2000 was 33.9 a decrease when compared with the preceding September quarter (36.1). All accommodation types showed decreases in average nightly rooms occupied in the September quarter 2000 compared to the corresponding 1999 period.

The average duration of stay was 2.9 days in the September quarter 2000, an increase of 0.1 days on the same period last year, with visitors in serviced apartments choosing to stay the longest (4.9 days).

### Takings from accommodation

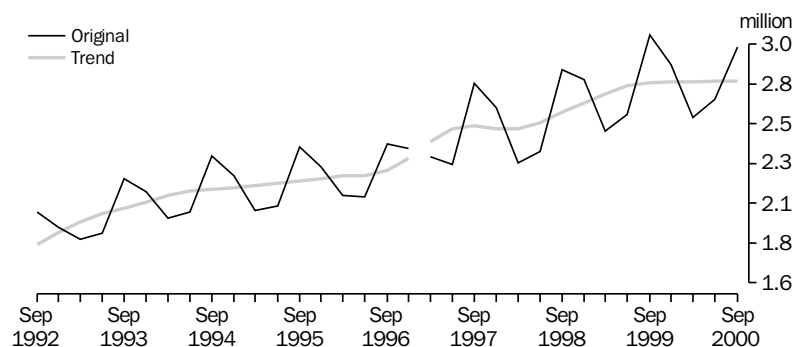
In the September quarter 2000, takings from accommodation totalled \$307.8 million, a gain of 5% (\$15.8 million) on the September quarter 1999. Serviced apartments recorded the strongest growth in takings, reflecting a 13% increase to \$73.5 million. However, 50% (\$153.5 million) of all takings in the period were earned by licensed hotels.

Average takings per establishment increased by 1% (\$4,600) to \$321,300 in the September quarter 2000 compared to the same period in 1999.

### Room nights occupied

For the September quarter 2000, the trend estimate of quarterly room nights occupied was 2.8 million, a level which has remained relatively static during the past six quarters.

QUARTERLY ROOM NIGHTS OCCUPIED, Qld

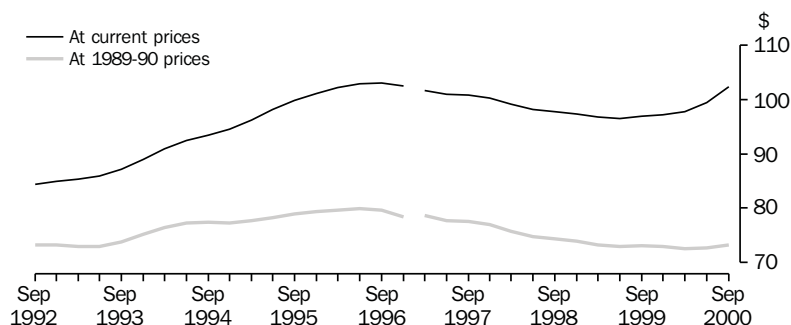


Note: There is a break in series between December quarter 1996 and March quarter 1997 because of scope changes to STA. Refer to Explanatory Notes, paragraphs 3-7.

Average takings per room  
night occupied

Average takings per room night occupied, at current prices, continued its upward trend since the June quarter 1999. In current prices, the trend estimate for the September quarter 2000 of \$102 increased 5% (\$5) on the September quarter 1999 level and 3% (\$2) on the June quarter 2000. However the estimate in 1989–90 prices of \$73, remained the same as a year ago.

AVERAGE TAKINGS PER ROOM NIGHT OCCUPIED, Qld: Trend



Notes: There is a break in series between December quarter 1996 and March quarter 1997 because of scope changes to STA. Refer to Explanatory Notes, paragraphs 3–7.

## 10

### HOTELS, MOTELS, GUEST HOUSES AND SERVICED APARTMENTS — QLD(a)

	Room nights occupied(b)			Takings at current prices(b)			Takings at average 1989–90 prices(c)		
	Original	Seasonally adjusted	Trend	Original	Seasonally adjusted	Trend	Original	Seasonally adjusted	Trend
	'000	'000	'000	\$m	\$m	\$m	\$m	\$m	\$m
<b>1990</b>	6 230.9	6 234.0	6 179.6	493.2	492.9	486.6	446.8	446.8	441.1
<b>1991</b>	6 761.7	6 743.9	6 737.3	559.8	557.3	556.5	490.7	488.7	487.8
<b>1992</b>	7 224.9	7 191.8	7 236.8	609.4	605.9	610.0	528.8	525.8	529.2
<b>1993</b>	8 089.6	8 088.5	8 074.9	702.5	701.5	701.4	596.3	595.5	595.6
<b>1994</b>	8 566.7	8 565.0	8 562.4	797.1	796.4	795.4	661.9	661.7	660.5
<b>1995</b>	8 753.9	8 756.5	8 761.7	866.1	865.1	866.5	687.5	687.1	688.3
<b>1996</b>	9 023.1	9 008.5	9 042.4	928.2	926.8	928.5	718.5	717.5	717.6
<b>1997</b>	10 034.9	10 021.8	9 958.3	1 012.1	1 010.6	1 005.5	778.2	776.9	774.2
<b>1998</b>	10 317.9	10 296.6	10 301.8	1 015.0	1 011.9	1 010.5	772.3	770.1	769.3
<b>1999</b>	11 014.0	11 005.9	11 014.8	1 068.9	1 067.6	1 067.1	806.1	805.4	804.9
<b>1999</b>									
Jun qtr	2 586.2	2 772.6	2 756.9	239.0	265.3	266.2	180.9	200.8	201.2
Sep qtr	3 055.9	2 804.0	2 773.2	292.0	273.0	269.1	219.4	205.1	202.7
Dec qtr	2 882.5	2 760.2	2 777.5	293.6	272.0	270.0	220.4	204.2	202.5
<b>2000</b>									
Mar qtr	2 570.2	2 726.3	2 778.2	252.9	263.6	271.6	187.8	195.7	201.7
Jun qtr	2 677.2	2 871.5	2 785.0	252.8	280.7	277.1	186.3	206.8	202.5
Sep qtr	2 982.4	2 730.0	2 785.3	307.8	286.4	285.0	218.4	203.3	204.0

(a) There is a break in series between December quarter 1996 and March quarter 1997 because of scope changes in the STA. Refer to Explanatory Notes, paragraphs 3 to 7.

(b) For presentation purposes the quarterly seasonally adjusted estimates for room nights occupied and takings at current prices are derived by summing the relevant monthly figures, while the quarterly trend estimates are derived from these quarterly seasonally adjusted figures.

(c) The deflator used to revalue current price data in this table is the Brisbane All Groups Consumer Price Index. See paragraphs 9 to 11 of the Explanatory Notes.

	Licensed hotels with facilities	Motels and guest houses	Serviced apart- ments	Star grading						Total
				1	2	3	4	5	Ungraded	
ESTABLISHMENTS AND CAPACITY										
	no.	no.	no.	no.	no.	no.	no.	no.	no.	no.
Sep qtr 1999										
Establishments	170	510	242	12	127	436	237	28	82	922
Guest rooms	20 622	18 360	12 172	327	3 359	16 384	20 569	6 762	3 753	51 154
Rooms per establishment	121	36	50	27	26	38	87	242	46	55
Sep qtr 2000										
Establishments	172	513	273	10	100	414	287	32	115	958
Guest rooms	20 668	18 370	13 517	251	2 452	15 317	22 019	8 167	4 349	52 555
Rooms per establishment	120	36	50	25	25	37	77	255	38	55
AVERAGE NIGHTLY ROOMS OCCUPIED PER ESTABLISHMENT										
	no.	no.	no.	no.	no.	no.	no.	no.	no.	no.
1999										
Sep qtr	80.1	23.7	31.4	12.3	14.4	25.0	59.2	160.3	22.9	36.1
2000										
Jul	75.2	21.8	28.5	10.8	11.7	23.0	48.1	159.7	19.0	33.3
Aug	80.1	21.7	29.8	11.8	11.2	23.0	49.8	177.8	20.0	34.5
Sep	76.7	21.0	31.2	12.1	11.7	22.7	49.5	163.3	20.5	33.9
Sep qtr	77.3	21.5	29.8	11.5	11.6	22.9	49.1	167.0	19.8	33.9
AVERAGE NIGHTLY GUESTS PER OCCUPIED ROOM										
	no.	no.	no.	no.	no.	no.	no.	no.	no.	no.
1999										
Sep qtr	1.9	1.8	2.5	1.5	1.8	2.0	2.1	2.0	1.9	2.0
2000										
Jul	1.9	1.8	2.5	1.9	1.8	2.0	2.1	1.9	1.9	2.0
Aug	1.8	1.7	2.4	1.9	1.8	1.9	2.0	1.9	1.9	1.9
Sep	2.0	1.8	2.6	2.0	1.9	2.0	2.2	2.0	2.0	2.1
Sep qtr	1.9	1.8	2.5	1.9	1.8	2.0	2.1	1.9	1.9	2.0
AVERAGE LENGTH OF STAY										
	days	days	days	days	days	days	days	days	days	days
1999										
Sep qtr	2.7	2.1	4.8	2.1	1.8	2.4	3.1	3.3	3.4	2.8
2000										
Jul	2.7	2.0	4.8	2.9	1.7	2.4	3.1	2.8	3.2	2.8
Aug	2.7	2.1	5.0	2.8	1.7	2.5	3.2	3.1	3.1	2.9
Sep	3.0	2.1	4.8	2.8	1.7	2.5	3.3	3.4	3.3	3.0
Sep qtr	2.8	2.1	4.9	2.8	1.7	2.5	3.2	3.1	3.2	2.9

				Star grading						
	Licensed hotels with facilities	Motels and guest houses	Serviced apart- ments	1	2	3	4	5	Ungraded	Total
TAKINGS FROM ACCOMMODATION										
	\$'000	\$'000	\$'000	\$'000	\$'000	\$'000	\$'000	\$'000	\$'000	\$'000
1999										
Sep qtr	146 789	80 287	64 895	481	10 163	73 618	129 066	64 428	14 216	291 971
2000										
Jul	48 617	27 613	23 594	174	2 233	23 433	44 581	23 642	5 762	99 824
Aug	53 853	27 568	23 982	188	2 136	23 276	45 962	27 550	6 291	105 403
Sep	51 021	25 645	25 886	194	2 156	23 112	45 098	25 652	6 340	102 552
Sep qtr	153 491	80 826	73 461	555	6 524	69 820	135 641	76 844	18 394	307 778
AVERAGE TAKINGS PER ESTABLISHMENT										
	\$'000	\$'000	\$'000	\$'000	\$'000	\$'000	\$'000	\$'000	\$'000	\$'000
1999										
Sep qtr	863.5	157.4	268.2	40.0	80.0	168.8	544.6	2 301.0	173.4	316.7
2000										
Jul	282.7	53.8	86.4	17.4	22.3	56.6	155.3	738.8	50.1	104.2
Aug	313.1	53.7	87.8	18.8	21.4	56.2	160.1	860.9	54.7	110.0
Sep	296.6	50.0	94.8	19.4	21.6	55.8	157.1	801.6	55.1	107.0
Sep qtr	892.4	157.6	269.1	55.5	65.2	168.6	472.6	2 401.4	159.9	321.3
AVERAGE TAKINGS PER ROOM NIGHT OCCUPIED										
	\$	\$	\$	\$	\$	\$	\$	\$	\$	\$
1999										
Sep qtr	117	72	93	35	60	74	100	156	84	96
2000										
Jul	121	80	98	52	61	80	104	150	85	101
Aug	126	80	95	52	61	79	104	156	88	103
Sep	130	80	101	53	62	82	107	164	90	106
Sep qtr	126	80	98	52	61	80	105	157	88	103
AVERAGE TAKINGS PER ROOM NIGHT AVAILABLE										
	\$	\$	\$	\$	\$	\$	\$	\$	\$	\$
1999										
Sep qtr	77	48	58	16	33	49	68	104	42	62
2000										
Jul	76	49	56	22	29	49	65	94	43	61
Aug	84	48	57	24	28	49	67	109	47	65
Sep	83	47	64	26	29	50	69	105	49	65
Sep qtr	81	48	59	24	29	50	67	102	46	64
AVERAGE TAKINGS PER GUEST NIGHT										
	\$	\$	\$	\$	\$	\$	\$	\$	\$	\$
1999										
Sep qtr	61	40	38	23	33	37	48	80	44	48
2000										
Jul	64	45	39	27	34	40	50	79	44	51
Aug	69	47	40	27	35	42	51	84	47	53
Sep	67	43	39	27	33	41	49	81	44	51
Sep qtr	67	45	39	27	34	41	50	81	45	52



## SOUTH AUSTRALIA

**Capacity** There were 10,499 guest rooms available in South Australia at the end of September 2000, spread across 233 accommodation establishments with 15 rooms or more. The number of guest rooms rose from 10,247 in the corresponding 1999 period, a 2% gain (252 rooms) while 2 new establishments were added. Half of the increase in capacity occurred in serviced apartments (127 rooms), licensed hotels contributed 33% (82 rooms) with motels and guest houses contributing 17% (43 rooms).

Between the September quarters of 1999 and 2000 the average nightly number of rooms occupied decreased slightly from 24.2 to 24.1. Licensed hotels increased 2% in this period from 37.3 to 38.2 nightly rooms, motels and guest houses remained at 18.0 while serviced apartments decreased 7%.

For the September quarter 2000, there were on average 1.6 nightly guests per occupied room, whose average duration of stay was 1.9 days. Serviced apartments had both the highest number of nightly guests per occupied room (2.0) and the longest duration of stay (3.2), the latter increasing by 0.1 days (3%) during the September quarter 2000 compared to the same period a year ago.

### Takings from accommodation

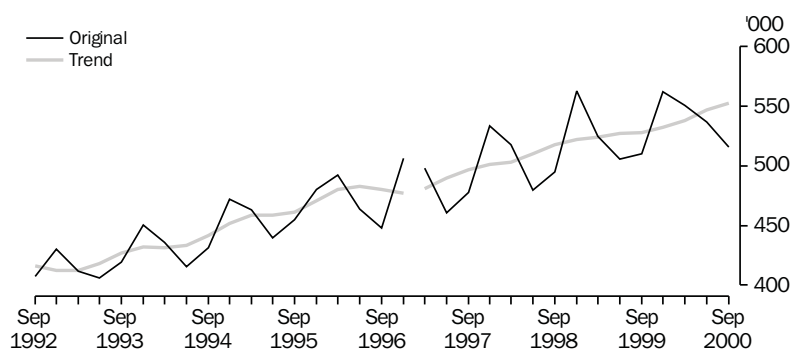
Takings from accommodation establishments in the September quarter 2000 were \$48.6 million, a 10% increase on the \$44.0 million recorded for the same period in 1999. This equated to \$208,500 in average takings per establishment, a 9% increase on the September quarter 1999 level (\$190,600). While all types of accommodation recorded increases, average takings for licensed hotels showed the greatest movement, rising 13% to \$381,500 in the September quarter 2000. Motels and guest houses rose by 9% to \$133,000 and serviced apartments by 3% to \$236,800.

In the September quarter 2000, average takings per room night occupied were \$94, an increase of \$8 on the September quarter 1999. Licensed hotels increased \$10 to \$109, motels and guest houses rose \$7 to \$81 and serviced apartments increased by \$3 to \$97.

### Room nights occupied

In the September quarter 2000, the trend estimate of room nights occupied was 552,800, an increase of 5% compared with the September quarter 1999 and an increase of 1% on the June quarter 2000 figure of 546,700.

QUARTERLY ROOM NIGHTS OCCUPIED, SA

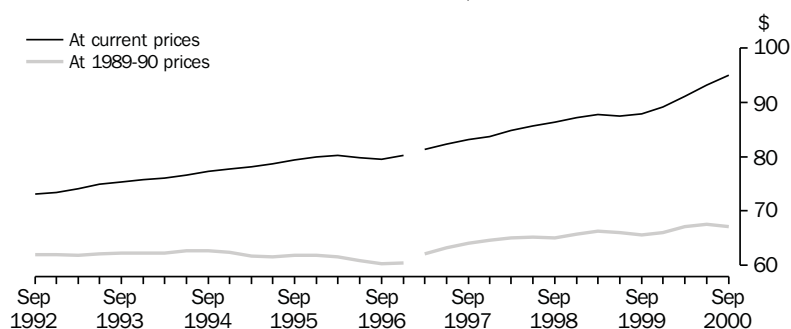


Note: There is a break in series between December quarter 1996 and March quarter 1997 because of scope changes to STA. Refer to Explanatory Notes, paragraphs 3-7.

Average takings per room  
night occupied

Average takings per room night occupied, in current price terms, has continued recent increases. The current price trend estimate of \$95 for the September quarter 2000 is up 8% (\$7) on the September quarter 1999 level and 2% (\$2) on the June quarter 2000 level. The estimate in 1989-90 prices of \$67 is \$1 more than for the September quarter 1999. The current price series reached its highest level during the September quarter 2000.

AVERAGE TAKINGS PER ROOM NIGHT OCCUPIED, SA: Trend



Notes: There is a series break between December quarter 1996 and March quarter 1997 because of scope changes to STA. Refer to Explanatory Notes, paragraphs 3–7.

# 13

## HOTELS, MOTELS, GUEST HOUSES AND SERVICED APARTMENTS — SA(a)

	Room nights occupied(b)			Takings at current prices(b)			Takings at average 1989–90 prices(c)		
	Original	Seasonally adjusted	Trend	Original	Seasonally adjusted	Trend	Original	Seasonally adjusted	Trend
	'000	'000	'000	\$m	\$m	\$m	\$m	\$m	\$m
<b>1990</b>	1 680.5	1 683.5	1 677.2	119.9	119.6	118.9	108.2	108.1	107.8
<b>1991</b>	1 620.5	1 621.9	1 627.3	121.1	120.8	121.2	104.9	105.0	104.9
<b>1992</b>	1 661.7	1 659.7	1 656.6	122.2	122.0	121.8	103.7	103.2	103.2
<b>1993</b>	1 687.0	1 688.7	1 689.7	126.6	126.6	126.8	105.2	105.1	105.1
<b>1994</b>	1 754.5	1 756.8	1 758.0	135.3	135.4	135.2	110.1	109.9	109.9
<b>1995</b>	1 838.0	1 844.3	1 849.7	145.1	145.5	146.2	113.4	113.8	114.2
<b>1996</b>	1 910.2	1 925.9	1 920.0	152.6	153.5	153.5	116.7	116.6	116.7
<b>1997</b>	1 970.3	1 971.4	1 968.7	163.1	163.3	162.8	125.1	125.4	125.1
<b>1998</b>	2 054.3	2 059.3	2 052.9	176.8	177.5	176.6	134.5	134.0	134.0
<b>1999</b>	2 102.6	2 104.1	2 111.6	185.0	184.9	186.0	138.9	139.1	139.4
<b>1999</b>									
Jun qtr	505.3	533.0	527.2	44.4	47.0	46.1	33.6	35.8	34.8
Sep qtr	510.4	533.7	528.2	44.0	46.5	46.4	32.9	34.0	34.7
Dec qtr	562.2	529.2	532.3	51.0	46.9	47.4	37.9	35.0	35.2
<b>2000</b>									
Mar qtr	550.7	525.3	538.1	50.4	48.6	49.0	37.1	35.8	36.2
Jun qtr	536.4	566.8	546.7	49.3	52.2	50.9	36.0	38.5	36.9
Sep qtr	516.0	541.6	552.8	48.6	51.7	52.5	34.3	35.8	37.1

(a) There is a break in series between December quarter 1996 and March quarter 1997 because of scope changes in the STA. Refer to Explanatory Notes, paragraphs 3 to 7.

(b) For presentation purposes the quarterly seasonally adjusted estimates for room nights occupied and takings at current prices are derived by summing the relevant monthly figures, while the quarterly trend estimates are derived from these quarterly seasonally adjusted figures.

(c) The deflator used to revalue current price data in this table is the Adelaide All Groups Consumer Price Index. See paragraphs 9 to 11 of the Explanatory Notes.

	Accommodation establishments			Star grading						
	Licensed hotels with facilities	Motels and guest houses	Serviced apartments						Ungraded	Total
	1	2	3	4	5					
ESTABLISHMENTS AND CAPACITY										
	no.	no.	no.	no.	no.	no.	no.	no.	no.	no.
Sep qtr 1999										
Establishments	62	146	23	5	51	124	38	4	9	231
Guest rooms	3 988	5 175	1 084	129	1 471	4 768	2 360	1 155	364	10 247
Rooms per establishment	64	35	47	26	29	38	62	289	40	44
Sep qtr 2000										
Establishments	60	147	26	6	52	117	44	4	10	233
Guest rooms	4 070	5 218	1 211	146	1 503	4 511	2 802	1 263	274	10 499
Rooms per establishment	68	35	47	24	29	39	64	316	27	45
AVERAGE NIGHTLY ROOMS OCCUPIED PER ESTABLISHMENT										
	no.	no.	no.	no.	no.	no.	no.	no.	no.	no.
1999										
Sep qtr	37.3	18.0	28.4	7.8	12.1	20.0	38.0	209.3	18.2	24.2
2000										
Jul	36.1	16.4	26.0	4.2	11.4	18.4	34.3	209.2	13.0	22.5
Aug	39.7	18.0	26.0	5.5	11.9	19.8	37.7	236.8	12.4	24.5
Sep	38.8	19.6	27.6	7.2	13.7	21.2	37.8	221.3	13.4	25.4
Sep qtr	38.2	18.0	26.5	5.6	12.3	19.8	36.6	222.4	13.0	24.1
AVERAGE NIGHTLY GUESTS PER OCCUPIED ROOM										
	no.	no.	no.	no.	no.	no.	no.	no.	no.	no.
1999										
Sep qtr	1.5	1.7	2.0	1.6	1.7	1.8	1.6	1.3	1.7	1.7
2000										
Jul	1.5	1.7	2.0	1.7	1.7	1.7	1.7	1.3	2.2	1.6
Aug	1.4	1.6	1.9	1.7	1.7	1.6	1.5	1.2	2.1	1.5
Sep	1.5	1.8	2.0	1.7	1.8	1.8	1.7	1.4	2.2	1.7
Sep qtr	1.5	1.7	2.0	1.7	1.7	1.7	1.6	1.3	2.2	1.6
AVERAGE LENGTH OF STAY										
	days	days	days	days	days	days	days	days	days	days
1999										
Sep qtr	1.9	1.7	3.1	1.6	1.6	1.8	2.2	2.0	2.7	1.9
2000										
Jul	1.8	1.7	3.6	1.4	1.6	1.8	2.3	1.9	3.2	1.9
Aug	1.8	1.7	3.0	1.6	1.6	1.8	2.1	1.9	3.1	1.9
Sep	1.9	1.7	3.0	1.5	1.7	1.8	2.2	2.2	3.1	1.9
Sep qtr	1.9	1.7	3.2	1.5	1.6	1.8	2.2	2.0	3.1	1.9

TAKINGS, ACCOMMODATION ESTABLISHMENTS										
	Licensed hotels with facilities	Motels and guest houses	Serviced apart- ments	Star grading						
				1	2	3	4	5	Ungraded	Total
TAKINGS FROM ACCOMMODATION										
	\$'000	\$'000	\$'000	\$'000	\$'000	\$'000	\$'000	\$'000	\$'000	\$'000
1999										
Sep qtr	20 959	17 812	5 265	153	2 845	16 226	14 084	9 660	1 069	44 037
2000										
Jul	7 161	5 979	2 049	40	1 002	4 918	5 217	3 700	313	15 190
Aug	7 940	6 659	2 076	57	1 075	5 327	5 795	4 135	285	16 675
Sep	7 786	6 910	2 031	62	1 219	5 617	5 558	3 958	312	16 727
Sep qtr	22 888	19 548	6 156	159	3 297	15 862	16 571	11 793	910	48 591
AVERAGE TAKINGS PER ESTABLISHMENT										
	\$'000	\$'000	\$'000	\$'000	\$'000	\$'000	\$'000	\$'000	\$'000	\$'000
1999										
Sep qtr	338.1	122.0	228.9	30.6	55.8	130.9	370.6	2 415.1	118.8	190.6
2000										
Jul	119.4	40.7	78.8	6.7	19.3	42.0	118.6	924.9	31.3	65.2
Aug	132.3	45.3	79.8	9.5	20.7	45.5	131.7	1 033.8	28.5	71.6
Sep	129.8	47.0	78.1	10.3	23.4	48.0	126.3	989.6	31.2	71.8
Sep qtr	381.5	133.0	236.8	26.5	63.4	135.6	376.6	2 948.3	91.0	208.5
AVERAGE TAKINGS PER ROOM NIGHT OCCUPIED										
	\$	\$	\$	\$	\$	\$	\$	\$	\$	\$
1999										
Sep qtr	99	74	94	43	50	71	106	125	89	86
2000										
Jul	108	80	98	51	54	74	112	143	77	94
Aug	108	81	99	55	56	75	113	141	74	95
Sep	112	80	95	48	57	75	112	149	78	94
Sep qtr	109	81	97	51	56	75	112	144	76	94
AVERAGE TAKINGS PER ROOM NIGHT AVAILABLE										
	\$	\$	\$	\$	\$	\$	\$	\$	\$	\$
1999										
Sep qtr	57	37	57	13	21	37	65	91	40	47
2000										
Jul	57	37	55	9	22	36	60	95	37	47
Aug	63	41	55	13	23	38	67	106	34	51
Sep	64	44	56	14	27	42	66	105	38	53
Sep qtr	62	41	55	12	24	38	64	102	36	50
AVERAGE TAKINGS PER GUEST NIGHT										
	\$	\$	\$	\$	\$	\$	\$	\$	\$	\$
1999										
Sep qtr	65	44	47	27	30	40	66	94	51	52
2000										
Jul	73	48	49	31	32	43	67	113	35	57
Aug	77	52	52	32	34	47	73	114	35	61
Sep	72	45	47	29	31	43	65	108	35	55
Sep qtr	74	48	49	30	32	44	68	111	35	58

## WESTERN AUSTRALIA

**Capacity** At the end of the September quarter 2000, there were 326 accommodation establishments in Western Australia with 15 or more rooms, 18 up on the same period 12 months earlier. Over the same period, the total capacity of these establishments rose from 17,804 to 19,052 guest rooms, an increase of 7% (1,248 guest rooms). All accommodation types recorded increases in capacity, the largest being serviced apartments (15% or 494 rooms), licensed hotels (5% or 446 rooms) and motels and guest houses (6% or 308 rooms). The average number of rooms per Western Australian accommodation establishment remained at 58.

Demand for accommodation in Western Australia decreased to 31.5 average nightly rooms occupied per establishment in the September quarter 2000, down from 34.0 in the same period in 1999. Demand in both licensed hotels, motels and guest houses accommodation types fell during this period, decreasing from 43.9 to 40.7 and 25.8 to 22.9 respectively. However serviced apartments showed a slight increase to 29.2 from 29.1 in the previous September quarter.

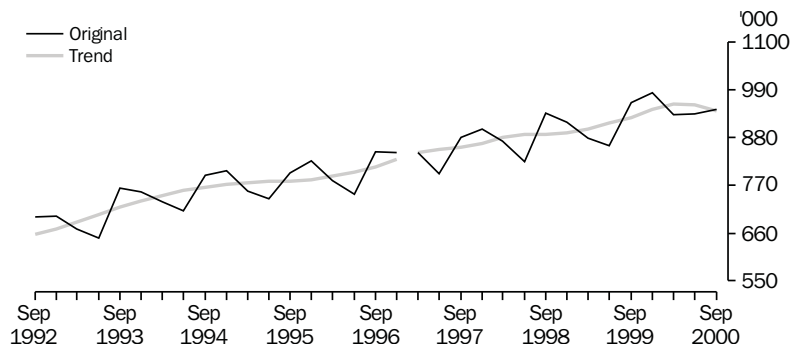
**Takings from accommodation** Takings from accommodation establishments during the September quarter 2000, totalled \$94.9 million, an increase of 5% (4.6 million) from the corresponding period in 1999. Average takings per establishment decreased 1%, from \$293,000 in the September quarter 1999 to \$291,100 in the September quarter 2000.

Average takings per room night occupied increased \$6 to \$100 for the September quarter 2000 compared to a year ago, while average takings per room night available fell \$1 to \$54 for the the corresponding period.

Average takings per guest night was \$61 for the September quarter 2000, a \$4 increase on the September quarter 1999. All accommodation types recorded increases for this period, licensed hotels by \$6, serviced apartments by \$2 and motels and guest houses by \$1.

**Room nights occupied** For the September quarter 2000, the trend estimate of room nights occupied was 940,800, an increase of 2% (14,000 room nights) since the September quarter 1999 but a decrease of 2% (14,900 room nights) on the June quarter 2000.

QUARTERLY ROOM NIGHTS OCCUPIED, WA

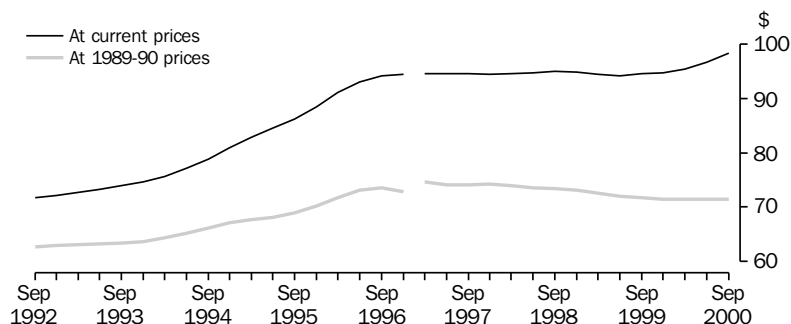


Note: There is a break in series between December quarter 1996 and March quarter 1997 because of scope changes to STA. Refer to Explanatory Notes, paragraphs 3–7.

Average takings per room  
night occupied

The September quarter 2000 trend estimate of average takings per room night occupied, in current prices, rose to \$98, a gain of 4% (\$3) compared to the equivalent 1999 period. In 1989–90 prices, the trend estimate remained at the September quarter 1999 level of \$72.

AVERAGE TAKINGS PER ROOM NIGHT OCCUPIED, WA: Trend



Notes: There is a break in series between December quarter 1996 and March quarter 1997 because of scope changes in STA. Refer to Explanatory Notes, paragraphs 3–7.

## 16

### HOTELS, MOTELS, GUEST HOUSES AND SERVICED APARTMENTS — WA(a)

	Room nights occupied(b)			Takings at current prices(b)			Takings at average 1989–90 prices(c)		
	Original	Seasonally adjusted	Trend	Original	Seasonally adjusted	Trend	Original	Seasonally adjusted	Trend
	'000	'000	'000	\$m	\$m	\$m	\$m	\$m	\$m
<b>1990</b>	2 503.6	2 503.9	2 498.5	170.5	170.4	169.7	152.1	152.1	151.6
<b>1991</b>	2 566.6	2 563.0	2 556.1	180.2	179.9	179.8	157.6	157.4	157.2
<b>1992</b>	2 645.7	2 634.4	2 636.4	189.6	188.8	188.6	165.5	164.8	164.6
<b>1993</b>	2 835.3	2 836.1	2 841.5	209.0	209.0	209.4	179.7	179.7	180.1
<b>1994</b>	3 041.7	3 042.3	3 042.8	237.9	237.6	237.8	200.2	200.0	200.0
<b>1995</b>	3 119.8	3 122.3	3 117.6	266.8	266.9	266.7	214.3	214.3	214.3
<b>1996</b>	3 223.3	3 221.7	3 235.4	301.2	300.7	301.7	235.8	235.5	235.7
<b>1997</b>	3 424.9	3 426.0	3 420.3	323.8	324.0	323.4	253.8	253.9	254.0
<b>1998</b>	3 547.2	3 551.2	3 547.5	336.5	336.7	336.3	260.7	260.9	260.8
<b>1999</b>	3 686.1	3 689.1	3 684.9	348.4	348.7	348.3	265.2	265.4	265.1
<b>1999</b>									
Jun qtr	861.7	922.0	913.7	81.4	86.9	86.0	62.2	66.4	65.7
Sep qtr	961.4	919.3	926.8	90.2	86.4	87.6	68.4	65.5	66.5
Dec qtr	984.1	952.4	945.4	94.0	90.6	89.6	70.7	68.2	67.6
<b>2000</b>									
Mar qtr	932.3	937.5	957.3	89.8	90.6	91.4	67.4	67.9	68.4
Jun qtr	934.0	999.9	955.7	88.1	94.1	92.4	65.6	70.1	68.3
Sep qtr	945.5	905.7	940.8	94.9	91.3	92.6	68.1	65.6	67.2

(a) There is a break in series between December quarter 1996 and March quarter 1997 because of scope changes in the STA. Refer to Explanatory Notes, paragraphs 3 to 7.

(b) For presentation purposes the quarterly seasonally adjusted estimates for room nights occupied and takings at current prices are derived by summing the relevant monthly figures, while the quarterly trend estimates are derived from these quarterly seasonally adjusted figures.

(c) The deflator used to revalue current price data in this table is the Perth All Groups Consumer Price Index. See paragraphs 9 to 11 of the Explanatory Notes.

				Star grading						
	Licensed hotels with facilities	Motels and guest houses	Serviced apart- ments	1	2	3	4	5	Ungraded	Total
ESTABLISHMENTS AND CAPACITY										
	no.	no.	no.	no.	no.	no.	no.	no.	no.	no.
Sep qtr 1999										
Establishments	128	116	64	4	32	128	52	11	81	308
Guest rooms	9 064	5 516	3 224	91	984	7 301	4 704	2 025	2 699	17 804
Rooms per establishment	71	48	50	23	31	57	90	184	33	58
Sep qtr 2000										
Establishments	133	124	69	3	26	131	64	14	88	326
Guest rooms	9 510	5 824	3 718	67	919	7 423	5 365	2 394	2 884	19 052
Rooms per establishment	72	47	54	22	35	57	84	171	33	58
AVERAGE NIGHTLY ROOMS OCCUPIED PER ESTABLISHMENT										
	no.	no.	no.	no.	no.	no.	no.	no.	no.	no.
1999										
Sep qtr	43.9	25.8	29.1	6.3	15.7	31.1	62.9	130.7	15.4	34.0
2000										
Jul	37.9	21.0	28.1	5.2	16.3	25.9	48.0	111.8	12.6	29.4
Aug	41.8	22.3	27.6	7.9	17.0	27.9	52.4	119.4	12.3	31.4
Sep	42.6	25.7	32.0	8.3	19.3	31.7	54.5	119.9	13.8	33.9
Sep qtr	40.7	22.9	29.2	7.1	17.5	28.4	51.6	117.0	12.9	31.5
AVERAGE NIGHTLY GUESTS PER OCCUPIED ROOM										
	no.	no.	no.	no.	no.	no.	no.	no.	no.	no.
1999										
Sep qtr	1.5	1.6	2.1	1.6	1.6	1.7	1.6	1.5	1.6	1.6
2000										
Jul	1.5	1.6	2.2	1.9	1.6	1.7	1.7	1.6	1.5	1.7
Aug	1.5	1.6	2.0	1.8	1.5	1.6	1.6	1.6	1.5	1.6
Sep	1.5	1.7	2.2	1.7	1.6	1.7	1.7	1.7	1.6	1.7
Sep qtr	1.5	1.6	2.1	1.8	1.6	1.7	1.7	1.6	1.6	1.7
AVERAGE LENGTH OF STAY										
	days	days	days	days	days	days	days	days	days	days
1999										
Sep qtr	2.0	1.9	3.6	1.2	1.8	2.2	2.4	2.3	2.1	2.2
2000										
Jul	2.1	2.0	3.4	1.2	2.1	2.1	2.5	2.7	2.1	2.3
Aug	2.1	2.0	3.2	1.3	1.9	2.0	2.4	2.8	2.1	2.3
Sep	2.2	2.0	3.1	1.4	2.0	2.1	2.4	2.9	2.1	2.3
Sep qtr	2.1	2.0	3.2	1.3	2.0	2.1	2.5	2.8	2.1	2.3

				Star grading						
	Licensed hotels with facilities	Motels and guest houses	Serviced apart- ments	1	2	3	4	5	Ungraded	Total
TAKINGS FROM ACCOMMODATION										
	\$'000	\$'000	\$'000	\$'000	\$'000	\$'000	\$'000	\$'000	\$'000	\$'000
1999										
Sep qtr	51 340	22 740	16 163	118	3 128	27 758	34 680	17 200	7 360	90 243
2000										
Jul	16 974	7 045	6 088	33	986	8 488	11 028	7 432	2 140	30 106
Aug	18 741	7 340	5 778	51	985	8 996	11 874	7 813	2 140	31 859
Sep	18 131	8 013	6 775	48	1 107	9 969	11 972	7 474	2 350	32 919
Sep qtr	53 846	22 397	18 641	131	3 077	27 453	34 873	22 719	6 630	94 884
AVERAGE TAKINGS PER ESTABLISHMENT										
	\$'000	\$'000	\$'000	\$'000	\$'000	\$'000	\$'000	\$'000	\$'000	\$'000
1999										
Sep qtr	401.1	196.0	252.5	29.5	97.7	216.9	666.9	1 563.6	90.9	293.0
2000										
Jul	127.6	56.8	88.2	10.9	37.9	64.8	172.3	530.9	24.3	92.4
Aug	140.9	59.2	83.7	16.9	37.9	68.7	185.5	558.1	24.3	97.7
Sep	136.3	64.6	98.2	15.9	42.6	76.1	187.1	533.9	26.7	101.0
Sep qtr	404.9	180.6	270.2	43.6	118.3	209.6	544.9	1 622.8	75.3	291.1
AVERAGE TAKINGS PER ROOM NIGHT OCCUPIED										
	\$	\$	\$	\$	\$	\$	\$	\$	\$	\$
1999										
Sep qtr	99	83	95	51	68	76	115	130	64	94
2000										
Jul	109	87	101	67	75	81	116	153	62	101
Aug	109	86	98	69	72	80	114	151	64	101
Sep	107	84	102	64	73	80	115	149	65	99
Sep qtr	108	86	101	67	74	80	115	151	64	100
AVERAGE TAKINGS PER ROOM NIGHT AVAILABLE										
	\$	\$	\$	\$	\$	\$	\$	\$	\$	\$
1999										
Sep qtr	62	45	55	14	35	42	80	92	30	55
2000										
Jul	58	39	53	16	35	37	66	100	24	51
Aug	64	41	50	24	35	39	71	105	24	54
Sep	64	46	61	24	40	45	74	104	27	58
Sep qtr	62	42	55	21	36	40	71	103	25	54
AVERAGE TAKINGS PER GUEST NIGHT										
	\$	\$	\$	\$	\$	\$	\$	\$	\$	\$
1999										
Sep qtr	67	52	45	31	42	44	72	88	40	57
2000										
Jul	74	54	46	35	46	47	68	95	41	61
Aug	75	55	48	39	47	49	72	96	42	63
Sep	70	50	47	37	47	46	67	89	40	59
Sep qtr	73	53	47	37	47	47	69	93	41	60



## TASMANIA

**Capacity** In the September quarter 2000, there were 130 accommodation establishments in Tasmania with 15 rooms or more, an increase of one since the September quarter 1999. In the 12 months to September 2000, the number of guest rooms rose by 29 rooms to 5,534.

During the September quarter 2000, the average nightly rooms occupied per establishment was 16.1, a decrease on the September quarter 1999 (17.4). However average nightly guests per occupied room and average length of stay remained the same as a year ago at 1.8 guests and 1.9 days respectively. Guests in serviced apartments stayed longer at 2.4 days, up from 2.3 a year ago. Guests in licensed hotels remained the same at 1.9 days while guests in motels and guest houses stayed 1.8 days compared to 1.7 days a year ago.

### Takings from accommodation

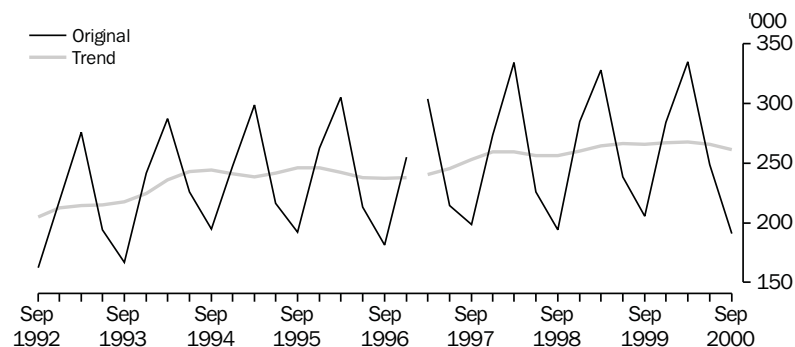
Total takings from accommodation were \$17.6 million in the September quarter 2000, a 2% increase (\$0.3 million) on the September quarter 1999 level. On average, accommodation takings per establishment rose 1% during this period to \$135,300, compared to \$134,100 in the September quarter 1999. The serviced apartments and licensed hotels accommodation types showed a small growth in average takings per establishment with motels and guest houses falling slightly.

Average takings per room night occupied for all accommodation types increased \$8 to \$92 compared to the same period a year ago. Average takings per guest night also increased, up \$4 to \$52 in the September quarter 2000.

### Room nights occupied

For the September quarter 2000, the trend estimate of room nights occupied was 261,100, a decrease of 2% on both the September 1999 level (265,700) and on the June quarter 2000 level (265,500).

QUARTERLY ROOM NIGHTS OCCUPIED, Tas

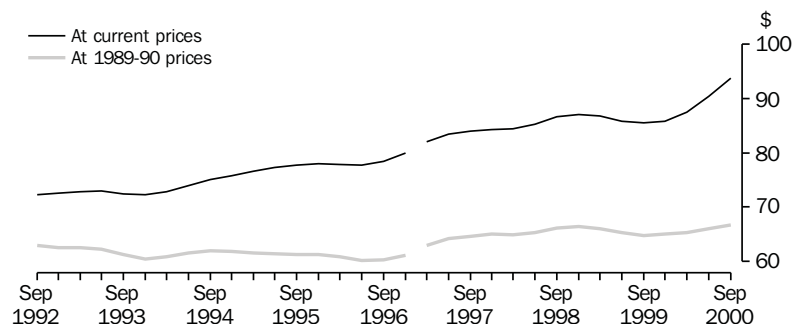


Note: There is a break in series between December quarter 1996 and March quarter 1997 because of scope changes to STA. Refer to Explanatory Notes, paragraphs 3-7.

Average takings per room  
night occupied

Average takings per room night occupied, in current prices, increased to \$94 for the September quarter 2000, an increase of 10% (\$8) on the September quarter 1999 level. The estimate in 1989–90 prices of \$67, reflects an increase of \$2 since the September quarter 1999 level.

AVERAGE TAKINGS PER ROOM NIGHT OCCUPIED, Tas: Trend



Notes: There is a break in series between December quarter 1996 and March quarter 1997 because of scope changes to STA. Refer to Explanatory Notes, paragraphs 3–7.

## 19

### HOTELS, MOTELS, GUEST HOUSES AND SERVICED APARTMENTS — TAS.(a)

	Room nights occupied(b)			Takings at current prices(b)			Takings at average 1989–90 prices(c)		
	Original	Seasonally adjusted	Trend	Original	Seasonally adjusted	Trend	Original	Seasonally adjusted	Trend
	'000	'000	'000	\$m	\$m	\$m	\$m	\$m	\$m
<b>1990</b>	786.3	791.1	780.8	53.3	53.8	52.9	48.5	48.8	48.7
<b>1991</b>	817.4	816.9	815.7	58.2	58.3	58.2	51.3	51.4	51.2
<b>1992</b>	815.4	815.3	822.4	59.1	59.0	59.5	51.4	51.5	51.9
<b>1993</b>	878.6	876.6	872.1	63.9	63.7	63.4	54.2	54.0	53.7
<b>1994</b>	954.9	961.0	964.3	70.9	71.5	71.8	58.7	59.2	59.4
<b>1995</b>	970.1	975.8	972.5	75.0	75.5	75.3	59.7	59.8	59.7
<b>1996</b>	954.4	952.9	954.9	75.2	74.9	75.0	58.3	58.0	57.9
<b>1997</b>	990.3	996.9	998.2	82.5	83.2	83.3	63.7	64.0	64.1
<b>1998</b>	1 039.1	1 035.6	1 032.1	89.7	89.3	88.6	68.7	68.4	67.8
<b>1999</b>	1 056.3	1 061.6	1 064.1	90.1	90.8	91.5	68.6	68.8	69.5
<b>1999</b>									
Jun qtr	238.6	267.3	266.6	20.1	22.9	22.9	15.4	17.5	17.4
Sep qtr	205.5	267.8	265.7	17.3	23.3	22.7	13.1	17.5	17.2
Dec qtr	284.3	265.4	267.3	24.3	22.4	23.0	18.3	17.0	17.4
<b>2000</b>									
Mar qtr	334.9	262.4	267.6	30.0	23.2	23.4	22.4	17.4	17.5
Jun qtr	248.5	279.3	265.5	21.7	24.8	24.0	16.1	18.3	17.5
Sep qtr	191.0	249.4	261.1	17.6	23.9	24.5	12.5	16.7	17.4

(a) There is a break in series between December quarter 1996 and March quarter 1997 because of scope changes in the STA. Refer to Explanatory Notes, paragraphs 3 to 7.

(b) For presentation purposes the quarterly seasonally adjusted estimates for room nights occupied and takings at current prices are derived by summing the relevant monthly figures, while the quarterly trend estimates are derived from these quarterly seasonally adjusted figures.

(c) The deflator used to revalue current price data in this table is the Hobart All Groups Consumer Price Index. See paragraphs 9 to 11 of the Explanatory Notes.

	Licensed hotels with facilities	Motels and guest houses	Serviced apart- ments	Star grading				Total
				1 and ungraded	2	3	4 and 5	
ESTABLISHMENTS AND CAPACITY								
	no.	no.	no.	no.	no.	no.	no.	no.
Sep qtr 1999								
Establishments	54	51	24	8	17	71	33	129
Guest rooms	2 897	1 751	857	247	473	2 598	2 187	5 505
Rooms per establishment	54	34	36	31	28	37	66	43
Sep qtr 2000								
Establishments	54	51	25	9	16	73	32	130
Guest rooms	2 909	1 749	876	291	439	2 738	2 066	5 534
Rooms per establishment	54	34	35	32	27	38	65	43
AVERAGE NIGHTLY ROOMS OCCUPIED PER ESTABLISHMENT								
	no.	no.	no.	no.	no.	no.	no.	no.
1999								
Sep qtr	22.4	12.4	16.5	6.7	6.5	12.9	35.2	17.4
2000								
Jul	18.1	9.9	13.9	6.4	6.4	9.9	29.7	14.1
Aug	21.1	10.8	14.3	5.9	6.3	10.9	34.2	15.8
Sep	22.7	13.8	18.7	8.8	6.3	14.8	35.6	18.5
Sep qtr	20.6	11.5	15.6	7.1	6.3	11.8	33.1	16.1
AVERAGE NIGHTLY GUESTS PER OCCUPIED ROOM								
	no.	no.	no.	no.	no.	no.	no.	no.
1999								
Sep qtr	1.6	1.9	2.1	1.6	1.4	2.0	1.6	1.8
2000								
Jul	1.5	1.8	2.0	2.2	1.3	1.9	1.5	1.7
Aug	1.5	1.8	1.9	2.0	1.3	1.9	1.5	1.7
Sep	1.7	2.0	2.3	2.5	1.3	2.1	1.7	1.9
Sep qtr	1.6	1.9	2.1	2.3	1.3	2.0	1.6	1.8
AVERAGE LENGTH OF STAY								
	days	days	days	days	days	days	days	days
1999								
Sep qtr	1.9	1.7	2.3	3.0	1.7	1.8	1.9	1.9
2000								
Jul	1.9	1.8	2.5	2.3	2.1	1.9	2.1	2.0
Aug	1.9	1.8	2.3	2.1	2.0	1.8	2.1	2.0
Sep	1.8	1.8	2.4	2.0	1.8	1.8	2.1	1.9
Sep qtr	1.9	1.8	2.4	2.1	1.9	1.8	2.1	1.9

	Licensed hotels with facilities	Motels and guest houses	Serviced apart- ments	Star grading				Total
				1 and ungraded	2	3	4 and 5	
TAKINGS FROM ACCOMMODATION								
	\$'000	\$'000	\$'000	\$'000	\$'000	\$'000	\$'000	\$'000
1999								
Sep qtr	9 429	4 363	3 500	255	416	5 660	10 961	17 292
2000								
Jul	2 768	1 311	1 138	149	137	1 641	3 291	5 218
Aug	3 376	1 345	1 164	128	127	1 772	3 857	5 885
Sep	3 321	1 702	1 459	200	130	2 321	3 832	6 483
Sep qtr	9 465	4 359	3 762	477	395	5 734	10 980	17 585
AVERAGE TAKINGS PER ESTABLISHMENT								
	\$'000	\$'000	\$'000	\$'000	\$'000	\$'000	\$'000	\$'000
1999								
Sep qtr	174.6	85.6	145.8	31.8	24.5	79.7	332.2	134.1
2000								
Jul	51.3	25.7	45.5	16.6	8.6	22.5	102.8	40.1
Aug	62.5	26.4	46.5	14.2	7.9	24.3	120.5	45.3
Sep	61.5	33.4	58.4	22.2	8.1	31.8	119.8	49.9
Sep qtr	175.3	85.5	150.5	53.0	24.7	78.5	343.1	135.3
AVERAGE TAKINGS PER ROOM NIGHT OCCUPIED								
	\$	\$	\$	\$	\$	\$	\$	\$
1999								
Sep qtr	85	75	96	51	41	68	103	84
2000								
Jul	91	83	106	83	44	73	112	92
Aug	96	81	105	77	41	73	114	94
Sep	90	84	104	84	43	73	112	91
Sep qtr	92	83	105	82	42	73	113	92
AVERAGE TAKINGS PER ROOM NIGHT AVAILABLE								
	\$	\$	\$	\$	\$	\$	\$	\$
1999								
Sep qtr	36	27	44	11	10	24	55	34
2000								
Jul	31	24	42	17	10	19	51	30
Aug	37	26	43	14	9	21	60	35
Sep	38	34	56	23	10	29	62	40
Sep qtr	35	28	47	18	10	23	58	35
AVERAGE TAKINGS PER GUEST NIGHT								
	\$	\$	\$	\$	\$	\$	\$	\$
1999								
Sep qtr	53	40	47	31	29	34	63	48
2000								
Jul	60	46	52	38	34	38	72	54
Aug	63	45	54	39	32	39	74	56
Sep	54	41	45	33	32	35	65	48
Sep qtr	59	44	50	36	33	37	70	52

## NORTHERN TERRITORY

**Capacity** At the end of the September quarter 2000, there were 91 accommodation establishments with 15 rooms or more in the Northern Territory, an increase of two on the September quarter 1999. The 91 establishments contained 6,258 guest rooms, 29 rooms more than a year ago. Over half of the guest rooms (3,153) were available in motels and guest house type accommodation.

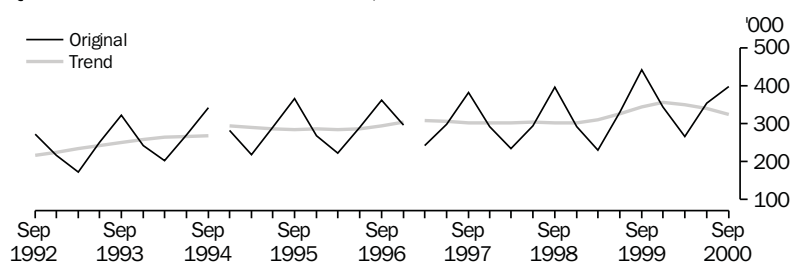
On average, accommodation establishments in the Territories tend to be larger than those in the States. The average number of guest rooms per establishment in the Northern Territory for the September quarter 2000 was 69. This was surpassed only by the Australian Capital Territory with an average of 84 rooms per establishment. The Australian average is 51 rooms per establishment.

In the September quarter 2000, the average nightly number of rooms occupied per establishment was 47.7, down from 54.4 a year ago. The decrease occurred across all accommodation types, but was strongest in motels and guest houses falling 15% to 41.8 followed by licensed hotels down 11% to 57.5 and serviced apartments down 6% to 51.4 rooms.

**Takings from accommodation** Takings by accommodation establishments in the Northern Territory were \$46.4 million in the September quarter 2000, a decrease of 1% (\$0.5 million) on the previous September quarter. Average takings per establishment declined 3% during this period, all attributable to motels and guest houses (down 6%). Serviced apartments average takings increased by 2% and licensed hotels by less than 1%.

**Room nights occupied** The trend estimate for room nights occupied for the September quarter 2000 was 325,400, a decrease of 6% on the September quarter 1999 and 4% on June quarter 2000.

QUARTERLY ROOM NIGHTS OCCUPIED, NT

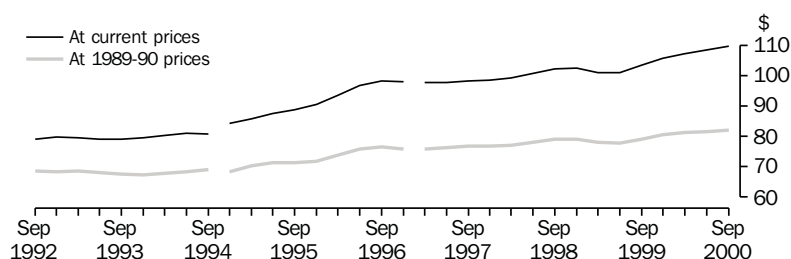


Notes: There is a break in series relating to the Northern Territory because two establishments previously classified as holiday units were reclassified as motels between the September and December quarters 1994.  
There is a break in series between December quarter 1996 and March quarter 1997 because of scope changes in STA. Refer to Explanatory Notes, paragraphs 3–7.

Average takings per room  
night occupied

In the September quarter 2000, the trend estimate for average takings per room night occupied in current price terms, increased to the highest level ever to be \$110, 6% (\$6) more than a year ago. In constant price terms, the average takings of \$82 per room night occupied reflects a \$3 gain on a year ago.

AVERAGE TAKINGS PER ROOM NIGHT OCCUPIED, NT: Trend



Notes: There is a break in series relating to the Northern Territory because two establishments previously classified as holiday units were reclassified as motels between the September and December quarters 1994.  
There is a break in series between December quarter 1996 and March quarter 1997 because of scope changes to the STA. Refer to Explanatory Notes, paragraphs 3–7.

## 22

### HOTELS, MOTELS, GUEST HOUSES AND SERVICED APARTMENTS — NT(a)

	Room nights occupied(b)			Takings at current prices(b)			Takings at average 1989–90 prices(c)		
	Original	Seasonally adjusted	Trend	Original	Seasonally adjusted	Trend	Original	Seasonally adjusted	Trend
	'000	'000	'000	\$m	\$m	\$m	\$m	\$m	\$m
<b>1990</b>	820.0	812.0	799.4	64.2	63.4	62.1	58.6	58.3	57.9
<b>1991</b>	817.6	814.5	818.8	66.6	66.2	66.5	58.7	58.2	58.6
<b>1992</b>	872.7	872.1	869.2	69.0	69.1	69.2	59.9	60.2	60.0
<b>1993</b>	989.8	985.1	986.7	78.6	78.3	78.3	67.0	66.8	67.0
<b>1994</b>	1 096.3	1 095.1	1 093.4	89.7	89.4	89.4	75.0	75.1	74.7
<b>1995</b>	1 146.4	1 145.4	1 149.1	101.3	100.9	101.4	81.3	81.0	81.7
<b>1996</b>	1 173.1	1 172.1	1 171.2	113.9	113.4	113.3	88.7	88.7	88.4
<b>1997</b>	1 217.7	1 219.6	1 219.2	119.8	119.8	119.7	93.2	93.5	93.2
<b>1998</b>	1 220.7	1 218.4	1 213.7	124.1	123.5	122.8	95.9	95.5	95.1
<b>1999</b>	1 347.9	1 337.1	1 338.2	139.0	138.1	138.0	106.7	105.6	105.7
<b>1999</b>									
Jun qtr	330.5	333.0	327.4	33.1	33.1	33.1	25.5	25.6	25.5
Sep qtr	443.0	346.0	344.9	46.9	35.7	35.7	36.0	27.4	27.3
Dec qtr	344.6	360.2	355.6	36.9	39.1	37.7	28.2	29.3	28.7
<b>2000</b>									
Mar qtr	267.2	341.9	351.6	26.9	36.3	37.7	20.4	28.0	28.6
Jun qtr	354.6	358.8	340.6	38.2	38.4	37.0	28.7	28.9	27.8
Sep qtr	399.3	309.8	325.4	46.4	34.8	35.7	33.7	25.6	26.7

(a) There is a break in series between December quarter 1996 and March quarter 1997 because of scope changes in the STA. Refer to Explanatory Notes, paragraphs 3 to 7.

(b) For presentation purposes the quarterly seasonally adjusted estimates for room nights occupied and takings at current prices are derived by summing the relevant monthly figures, while the quarterly trend estimates are derived from these quarterly seasonally adjusted figures.

(c) The deflator used to revalue current price data in this table is the Darwin All Groups Consumer Price Index. See paragraphs 9 to 11 of the Explanatory Notes.

	Licensed hotels with facilities	Motels and guest houses	Serviced apart- ments	Star grading				Total
				1 and ungraded	2	3	4 and 5	
ESTABLISHMENTS AND CAPACITY								
	no.	no.	no.	no.	no.	no.	no.	no.
Sep qtr 1999								
Establishments	24	47	18	19	22	33	15	89
Guest rooms	2 002	3 093	1 134	598	960	2 625	2 046	6 229
Rooms per establishment	83	66	63	31	44	80	136	70
Sep qtr 2000								
Establishments	23	50	18	22	19	34	16	91
Guest rooms	1 937	3 153	1 168	675	780	2 531	2 272	6 258
Rooms per establishment	84	63	65	31	41	74	142	69
AVERAGE NIGHTLY ROOMS OCCUPIED PER ESTABLISHMENT								
	no.	no.	no.	no.	no.	no.	no.	no.
1999								
Sep qtr	64.3	49.3	54.4	20.5	28.5	60.7	121.4	54.4
2000								
Jul	57.3	44.3	55.2	20.8	26.8	52.1	111.9	49.7
Aug	63.1	44.7	55.2	20.4	25.6	54.3	118.7	51.4
Sep	52.0	36.3	43.5	15.3	19.9	42.1	103.2	41.7
Sep qtr	57.5	41.8	51.4	18.9	24.1	49.5	111.4	47.7
AVERAGE NIGHTLY GUESTS PER OCCUPIED ROOM								
	no.	no.	no.	no.	no.	no.	no.	no.
1999								
Sep qtr	1.6	1.8	2.1	1.9	1.8	1.9	1.7	1.8
2000								
Jul	1.7	1.8	2.1	1.9	1.8	2.0	1.7	1.8
Aug	1.8	1.8	2.0	1.9	1.7	2.0	1.7	1.8
Sep	1.7	1.7	2.1	1.9	1.8	2.0	1.6	1.8
Sep qtr	1.7	1.8	2.1	1.9	1.8	2.0	1.6	1.8
AVERAGE LENGTH OF STAY								
	days	days	days	days	days	days	days	days
1999								
Sep qtr	1.8	1.9	3.2	2.1	1.6	1.9	2.6	2.1
2000								
Jul	1.8	2.0	3.2	2.3	1.6	2.2	2.3	2.2
Aug	1.8	1.9	3.1	2.4	1.7	2.0	2.2	2.1
Sep	1.8	2.0	3.1	2.1	1.7	2.0	2.4	2.1
Sep qtr	1.8	2.0	3.1	2.3	1.6	2.1	2.3	2.1

				Star grading				
	Licensed hotels with facilities	Motels and guest houses	Serviced apartments	1 and ungraded	2	3	4 and 5	Total
TAKINGS FROM ACCOMMODATION								
	\$'000	\$'000	\$'000	\$'000	\$'000	\$'000	\$'000	\$'000
1999								
Sep qtr	17 562	19 364	9 977	2 803	4 445	19 004	20 651	46 903
2000								
Jul	5 720	7 032	3 733	1 220	1 270	6 501	7 495	16 486
Aug	6 443	7 145	3 767	1 213	1 162	6 896	8 084	17 355
Sep	4 713	5 134	2 726	843	874	4 869	5 988	12 574
Sep qtr	16 877	19 311	10 227	3 276	3 305	18 266	21 567	46 415
AVERAGE TAKINGS PER ESTABLISHMENT								
	\$'000	\$'000	\$'000	\$'000	\$'000	\$'000	\$'000	\$'000
1999								
Sep qtr	731.7	412.0	554.3	147.5	202.0	575.9	1 376.7	527.0
2000								
Jul	248.7	140.6	207.4	55.5	66.8	191.2	468.4	181.2
Aug	280.1	142.9	209.3	55.1	61.2	202.8	505.2	190.7
Sep	204.9	102.7	151.5	38.3	46.0	143.2	374.3	138.2
Sep qtr	733.8	386.2	568.1	148.9	174.0	537.2	1 348.0	510.1
AVERAGE TAKINGS PER ROOM NIGHT OCCUPIED								
	\$	\$	\$	\$	\$	\$	\$	\$
1999								
Sep qtr	125	91	111	78	77	104	124	106
2000								
Jul	140	103	121	86	80	119	135	118
Aug	143	103	122	87	77	121	137	120
Sep	131	94	116	83	77	114	121	110
Sep qtr	139	100	120	86	78	118	132	116
AVERAGE TAKINGS PER ROOM NIGHT AVAILABLE								
	\$	\$	\$	\$	\$	\$	\$	\$
1999								
Sep qtr	96	68	96	51	50	79	110	82
2000								
Jul	95	72	103	58	53	83	106	85
Aug	107	73	104	58	48	88	115	90
Sep	81	54	78	42	37	64	88	67
Sep qtr	95	67	95	53	46	78	103	81
AVERAGE TAKINGS PER GUEST NIGHT								
	\$	\$	\$	\$	\$	\$	\$	\$
1999								
Sep qtr	77	51	54	41	42	55	74	59
2000								
Jul	81	57	58	45	44	59	82	64
Aug	81	58	60	46	44	60	83	65
Sep	76	54	56	44	42	56	76	61
Sep qtr	80	57	58	45	44	59	81	64



## AUSTRALIAN CAPITAL TERRITORY

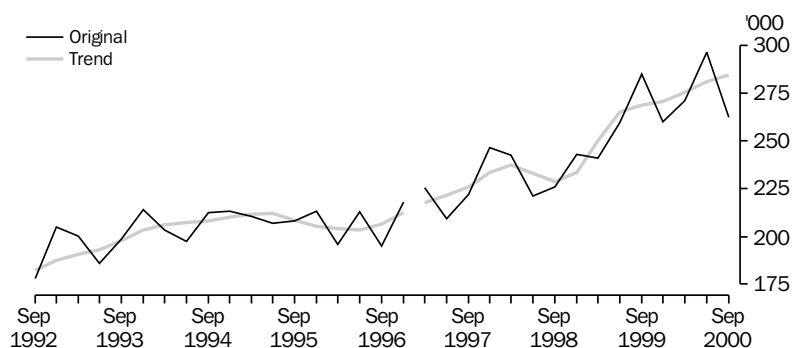
**Capacity** At the end of the September quarter 2000 there were 60 accommodation establishments with 15 rooms or more in the Australian Capital Territory, an increase of three since the September quarter 1999. The overall capacity of accommodation establishments rose by 297 guest rooms to 5,023 during this period, with serviced apartments up 19% (228 rooms), licensed hotels up 11% (184 rooms) while motels and guest houses showed a decrease of 6% (115 rooms). The average number of rooms per establishment across all accommodation types at the end of the September quarter 2000 was 84 guest rooms, an increase of one in comparison to the previous year.

Accommodation establishments in the Australian Capital Territory had on average 47.5 nightly rooms occupied in the September quarter 2000, down from 55.0 in the same period last year. Within the quarter, the highest level of nightly rooms occupied occurred in the month of July 2000 with 48.4. On average, guests chose to stay 2.2 nights during the September quarter 2000, an increase of 0.1 nights on the corresponding 1999 period. Across all accommodation types, guests in serviced apartments stayed an average of 4.0 days (an increase of 0.6 days), licensed hotels remained at 1.8 days while guests in motels and guest houses stayed for a shorter period of 1.7 days.

**Takings from accommodation** Total takings from accommodation establishments were \$28.7 million in the September quarter 2000, a 2% increase (\$0.5 million) on the same period in 1999. Serviced apartments experienced a 6% increase in takings, slightly higher than licensed hotels (5%) while motels and guest houses decreased by 9%. Takings from licensed hotels during the September quarter 2000 represented 46% of all takings.

**Room nights occupied** The trend estimate of room nights occupied during the September quarter 2000 was 284,600. This was an increase of 6% on the September quarter 1999 and a 1% increase on the June quarter 2000.

QUARTERLY ROOM NIGHTS OCCUPIED, ACT

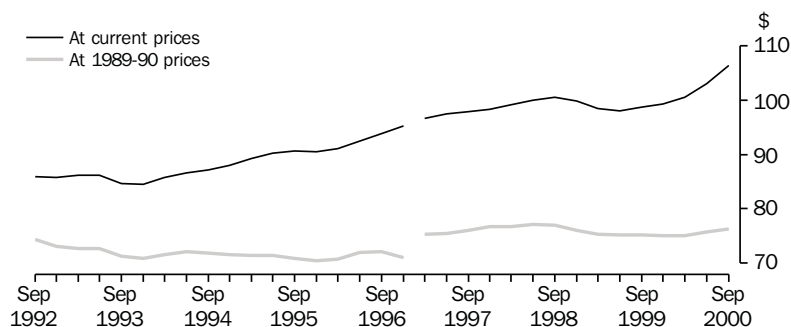


Note: There is a break in series between December quarter 1996 and March quarter 1997 because of scope changes to the STA. Refer to Explanatory Notes, paragraphs 3-7.

Average takings per room  
night occupied

The trend estimate of average takings per room night occupied, in current prices, reached a new high of \$106 in the September quarter 2000, an increase of 8% (\$7) on the corresponding period last year. In constant price terms, the September quarter 2000 average takings of \$76 per room night occupied is \$1 more than a year ago but \$1 less than the same period two years ago..

AVERAGE TAKINGS PER ROOM NIGHT OCCUPIED, ACT: Trend



Notes: There is a break in series between December quarter 1996 and March quarter 1997 because of scope changes to the STA. Refer to Explanatory Notes, paragraphs 3–7.

## 25

### HOTELS, MOTELS, GUEST HOUSES AND SERVICED APARTMENTS — ACT(a)

	Room nights occupied(b)			Takings at current prices(b)			Takings at average 1989–90 prices(c)		
	Original	Seasonally adjusted	Trend	Original	Seasonally adjusted	Trend	Original	Seasonally adjusted	Trend
	'000	'000	'000	\$m	\$m	\$m	\$m	\$m	\$m
<b>1990</b>	694.6	696.3	699.5	56.8	56.9	57.0	51.3	51.2	51.5
<b>1991</b>	696.7	697.1	695.8	58.1	58.2	58.0	50.8	50.9	50.7
<b>1992</b>	758.9	755.9	724.0	62.9	62.5	62.8	54.1	54.1	54.2
<b>1993</b>	798.9	799.8	784.6	67.2	67.3	67.0	56.6	56.6	56.4
<b>1994</b>	826.4	829.6	831.5	71.6	72.0	72.2	59.4	59.4	59.7
<b>1995</b>	838.7	840.2	837.5	75.7	75.7	75.5	59.6	59.7	59.5
<b>1996</b>	821.5	818.7	826.4	76.5	76.3	77.0	58.8	58.9	59.0
<b>1997</b>	903.3	903.5	898.8	88.1	88.2	87.7	68.3	68.2	68.2
<b>1998</b>	933.1	934.9	932.7	93.5	93.5	93.1	71.9	71.9	71.6
<b>1999</b>	1 045.8	1 049.7	1 054.8	103.1	103.6	104.0	78.7	78.7	79.3
<b>1999</b>									
Jun qtr	259.7	266.9	265.1	25.4	25.8	26.0	19.5	20.1	19.9
Sep qtr	284.9	284.0	268.6	28.2	28.2	26.5	21.5	21.6	20.2
Dec qtr	260.1	253.4	270.8	25.8	25.5	26.9	19.5	18.8	20.3
<b>2000</b>									
Mar qtr	271.3	270.4	275.6	27.3	27.0	27.7	20.4	20.3	20.7
Jun qtr	296.4	304.3	281.8	30.1	30.6	29.0	22.3	23.0	21.3
Sep qtr	262.4	267.9	284.6	28.7	29.5	30.3	20.5	20.6	21.7

(a) There is a break in series between December quarter 1996 and March quarter 1997 because of scope changes in the STA. Refer to Explanatory Notes, paragraphs 3 to 7.

(b) For presentation purposes the quarterly seasonally adjusted estimates for room nights occupied and takings at current prices are derived by summing the relevant monthly figures, while the quarterly trend estimates are derived from these quarterly seasonally adjusted figures.

(c) The deflator used to revalue current price data in this table is the Canberra All Groups Consumer Price Index. See paragraphs 9 to 11 of the Explanatory Notes.

	Licensed hotels with facilities	Motels and guest houses	Serviced apart- ments	Star grading				Total
				1 and ungraded	2	3	4 and 5	
ESTABLISHMENTS AND CAPACITY								
	no.	no.	no.	no.	no.	no.	no.	no.
Sep qtr 1999								
Establishments	14	26	17	11	7	22	17	57
Guest rooms	1 717	1 792	1 217	653	404	1 680	1 989	4 726
Rooms per establishment	123	69	72	59	58	76	117	83
Sep qtr 2000								
Establishments	15	25	20	10	8	20	22	60
Guest rooms	1 901	1 677	1 445	519	561	1 396	2 547	5 023
Rooms per establishment	127	67	72	52	70	70	116	84
AVERAGE NIGHTLY ROOMS OCCUPIED PER ESTABLISHMENT								
	no.	no.	no.	no.	no.	no.	no.	no.
1999								
Sep qtr	82.8	40.2	54.8	37.1	33.3	47.0	85.9	55.0
2000								
Jul	73.1	35.0	46.7	28.5	35.6	35.0	74.4	48.4
Aug	74.4	33.6	44.2	28.3	34.7	35.0	71.8	47.3
Sep	73.3	32.8	44.5	24.8	35.3	34.7	72.2	46.8
Sep qtr	73.6	33.8	45.1	27.2	35.2	34.9	72.8	47.5
AVERAGE NIGHTLY GUESTS PER OCCUPIED ROOM								
	no.	no.	no.	no.	no.	no.	no.	no.
1999								
Sep qtr	1.5	1.8	1.7	1.5	2.4	1.7	1.6	1.7
2000								
Jul	1.6	1.9	1.9	1.8	2.1	2.0	1.6	1.8
Aug	1.4	1.8	1.8	1.7	1.8	1.9	1.4	1.6
Sep	1.5	1.8	1.9	1.8	2.0	2.0	1.5	1.7
Sep qtr	1.5	1.8	1.8	1.8	2.0	1.9	1.5	1.7
AVERAGE LENGTH OF STAY								
	days	days	days	days	days	days	days	days
1999								
Sep qtr	1.8	1.8	3.4	2.0	2.0	2.1	2.2	2.1
2000								
Jul	1.9	1.7	4.1	3.3	2.8	2.4	1.9	2.2
Aug	1.7	1.7	3.8	2.6	2.5	2.4	1.8	2.1
Sep	1.9	1.7	4.1	3.0	2.3	2.4	2.1	2.3
Sep qtr	1.8	1.7	4.0	3.0	2.5	2.4	2.0	2.2

	Licensed hotels with facilities	Motels and guest houses	Serviced apart- ments	Star grading				Total
				1 and ungraded	2	3	4 and 5	
TAKINGS FROM ACCOMMODATION								
	\$'000	\$'000	\$'000	\$'000	\$'000	\$'000	\$'000	\$'000
1999								
Sep qtr	12 656	7 048	8 525	2 290	1 302	7 935	16 701	28 229
2000								
Jul	4 182	2 180	3 196	817	559	1 881	6 301	9 558
Aug	4 299	2 067	2 923	767	516	1 827	6 179	9 289
Sep	4 767	2 182	2 951	709	585	1 848	6 757	9 900
Sep qtr	13 248	6 429	9 070	2 293	1 661	5 556	19 237	28 747
AVERAGE TAKINGS PER ESTABLISHMENT								
	\$'000	\$'000	\$'000	\$'000	\$'000	\$'000	\$'000	\$'000
1999								
Sep qtr	904.0	271.1	501.4	208.2	186.0	360.7	982.4	495.2
2000								
Jul	278.8	87.2	159.8	81.7	69.9	94.1	286.4	159.3
Aug	286.6	82.7	146.1	76.7	64.5	91.4	280.9	154.8
Sep	317.8	87.3	147.6	70.9	73.2	92.4	307.1	165.0
Sep qtr	883.2	257.2	453.5	229.3	207.6	277.8	874.4	479.1
AVERAGE TAKINGS PER ROOM NIGHT OCCUPIED								
	\$	\$	\$	\$	\$	\$	\$	\$
1999								
Sep qtr	119	75	101	66	61	83	125	99
2000								
Jul	123	80	110	93	63	87	124	106
Aug	124	79	107	87	60	84	126	106
Sep	144	89	111	95	69	89	142	117
Sep qtr	130	83	109	92	64	87	131	110
AVERAGE TAKINGS PER ROOM NIGHT AVAILABLE								
	\$	\$	\$	\$	\$	\$	\$	\$
1999								
Sep qtr	80	44	77	41	35	51	92	66
2000								
Jul	71	42	71	51	32	44	80	61
Aug	73	40	65	48	30	42	78	60
Sep	84	43	68	46	35	44	88	66
Sep qtr	76	42	68	48	32	43	82	62
AVERAGE TAKINGS PER GUEST NIGHT								
	\$	\$	\$	\$	\$	\$	\$	\$
1999								
Sep qtr	77	41	58	42	26	48	79	59
2000								
Jul	78	43	59	52	31	44	77	60
Aug	90	45	61	51	33	45	88	65
Sep	99	50	58	54	34	45	94	69
Sep qtr	88	46	59	52	33	45	86	65

## INTERNATIONAL TOURISM

### INTRODUCTION

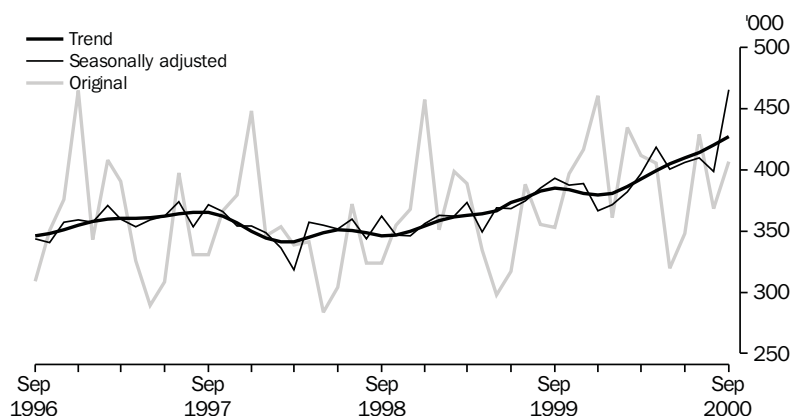
The statistics presented in this section are sourced from the overseas arrivals and departures data obtained from incoming and outgoing passenger cards, collected by the Department of Immigration and Multicultural Affairs (DIMA). The data relate to short-term movements (less than 12 months) of visitors to or from Australia, and departures of Australian residents for short-term trips abroad. The statistics presented here supplement those already released in the monthly publication, *Overseas Arrivals and Departures, Australia* (ABS Cat. no. 3401.0).

Note: Data for the September quarter are preliminary. Refer to pages 2 and 5 in this issue concerning availability of final Overseas Arrivals and Departures data.

### VISITOR ARRIVALS

There were an estimated 1,203,800 short-term visitor arrivals to Australia during the September quarter 2000, with the highest number occurring during July (429,000). The September quarterly arrivals represent an increase of 10% (106,600) on the corresponding 1999 quarter but a decrease of 12% (131,000) on the June quarter 2000. In trend terms, this corresponded to a 19% increase on the September quarter 1999 and an increase of 4% on the June quarter 2000.

OVERSEAS ARRIVALS, Short-term visitors—Total



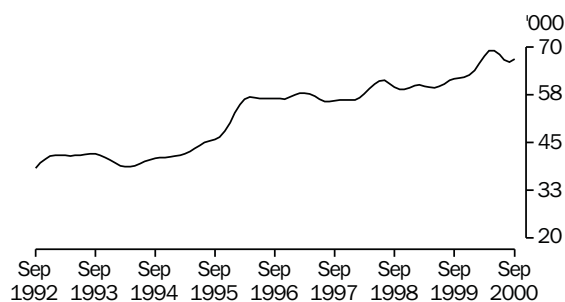
In original terms, the major source countries of visitor arrivals to Australia during the September quarter 2000 were NZ (19% or 229,700 of all arrivals), Japan (15% or 178,600), the USA (11% or 129,500) and the UK (9% or 103,900) (refer to table 28).

Compared to the same period last year, USA arrivals increased by 36% and NZ by 7%, while Japan and UK arrivals recorded a fall (down 5% and 4% respectively) in visitor numbers to Australia during the September quarter 2000.

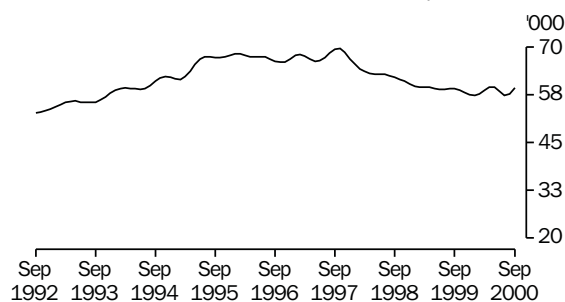
# VISITOR ARRIVALS *continued*

Trend analysis of the four major source countries show that NZ arrivals increased slightly on the August 2000 figure, ending the decline in the series since the record peak in April and May 2000. Japan arrivals have also increased marginally over the last three months, but still well below the peak of August 1997 (68,400). UK arrivals remained unchanged from the previous month, marginally below the record level a year ago in September 1999. Arrivals from the USA have continued their upward trend, rising significantly over the previous 12 months.

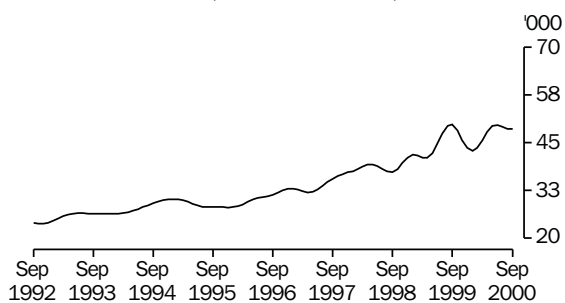
OVERSEAS ARRIVALS, Short-term visitors, NZ: **Trend**



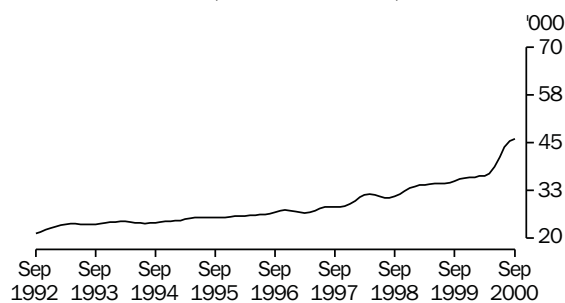
OVERSEAS ARRIVALS, Short-term visitors, Japan: **Trend**



OVERSEAS ARRIVALS, Short-term visitors, UK: **Trend**



OVERSEAS ARRIVALS, Short-term visitors, USA: **Trend**



Country of residence	Original				Change over Sep qtr 1999	Proportion of total visitors	Median intended length of stay	Person days
	Jul	Aug	Sep	Sep qtr 2000				
	'000	'000	'000	'000	%	%	days	'000
Oceania and Antarctica								
New Zealand	82.4	73.7	73.6	229.7	6.5	19.1	n.y.a.	n.y.a.
Other	11.0	9.3	12.4	32.7	2.2	2.7	n.y.a.	n.y.a.
Total	93.4	83.0	86.0	262.4	5.9	21.8	n.y.a.	n.y.a.
Europe and the former USSR								
France	6.3	n.y.a.	n.y.a.	n.y.a.	n.y.a.	n.y.a.	n.y.a.	n.y.a.
Germany	9.8	8.4	13.4	31.6	6.8	2.6	n.y.a.	n.y.a.
Italy	6.0	7.2	5.7	18.9	15.2	1.6	n.y.a.	n.y.a.
Netherlands	5.4	3.9	5.8	15.1	14.4	1.3	n.y.a.	n.y.a.
Switzerland	3.5	2.4	5.0	10.9	10.1	0.9	n.y.a.	n.y.a.
United Kingdom	38.7	31.5	33.7	103.9	-3.7	8.6	n.y.a.	n.y.a.
Other	17.5	(a)20.3	(a)41.6	(a)85.7	44.3	7.1	n.y.a.	n.y.a.
Total	87.2	73.7	105.2	266.1	12.6	22.1	n.y.a.	n.y.a.
Middle East and North Africa								
Total	9.1	7.3	6.0	22.4	9.3	1.9	n.y.a.	n.y.a.
Southeast Asia								
Indonesia	11.8	5.3	7.0	24.1	18.7	2.0	n.y.a.	n.y.a.
Malaysia	10.2	11.3	10.4	31.9	-4.5	2.6	n.y.a.	n.y.a.
Singapore	16.4	14.9	15.3	46.6	-16.2	3.9	n.y.a.	n.y.a.
Thailand	5.7	4.2	4.8	14.7	16.7	1.2	n.y.a.	n.y.a.
Other	4.8	4.7	4.9	14.4	12.5	1.2	n.y.a.	n.y.a.
Total	48.9	40.4	42.4	131.7	-2.2	10.9	n.y.a.	n.y.a.
Northeast Asia								
China	12.5	9.8	8.2	30.5	33.8	2.5	n.y.a.	n.y.a.
Hong Kong (SAR of China)	16.7	10.8	5.3	32.8	-11.1	2.7	n.y.a.	n.y.a.
Japan	62.9	68.3	47.4	178.6	-5.1	14.8	n.y.a.	n.y.a.
Korea	15.6	11.3	12.1	39.0	59.2	3.2	n.y.a.	n.y.a.
Taiwan	16.9	11.7	7.2	35.8	-10.5	3.0	n.y.a.	n.y.a.
Other	0.3	0.2	1.8	2.3	155.6	0.2	n.y.a.	n.y.a.
Total	124.9	112.1	82.0	319.0	1.9	26.5	n.y.a.	n.y.a.
Southern Asia								
Total	4.9	n.y.a.	n.y.a.	n.y.a.	n.y.a.	n.y.a.	n.y.a.	n.y.a.
The Americas								
Canada	6.7	5.9	8.4	21.0	37.3	1.7	n.y.a.	n.y.a.
United States of America	43.8	32.1	53.6	129.5	36.3	10.8	n.y.a.	n.y.a.
Other	3.3	2.9	8.4	14.6	108.6	1.2	n.y.a.	n.y.a.
Total	53.8	40.9	70.4	165.1	40.8	13.7	n.y.a.	n.y.a.
Africa								
Total	6.4	6.7	9.1	22.2	42.3	1.8	n.y.a.	n.y.a.
Other and not stated	0.5	(b)4.2	(b)5.4	(b)10.1	-14.4	0.8	n.y.a.	n.y.a.
<b>Total</b>	<b>429.0</b>	<b>368.3</b>	<b>406.5</b>	<b>1 203.8</b>	<b>9.7</b>	<b>100.0</b>	<b>n.y.a.</b>	<b>n.y.a.</b>

(a) Includes France.

(b) Includes Southern Asia.

	1999			2000								
	Oct	Nov	Dec	Jan	Feb	Mar	Apr	May	Jun	Jul	Aug	Sep
Country of residence	'000	'000	'000	'000	'000	'000	'000	'000	'000	'000	'000	'000
ORIGINAL												
Canada	7.2	8.4	9.7	8.2	8.6	8.2	5.6	4.4	4.2	6.7	5.9	8.4
Germany	17.5	14.9	18.6	14.1	14.7	13.1	10.6	7.5	6.5	9.8	8.4	13.4
Hong Kong (SAR of China)	10.7	10.4	13.3	10.9	20.8	10.8	15.3	9.4	10.7	16.7	10.8	5.3
Japan	54.5	57.8	58.4	50.3	68.5	73.3	54.7	51.3	48.7	62.9	68.3	47.4
Malaysia	10.6	12.5	14.7	8.9	18.0	12.2	12.5	14.9	9.1	10.2	11.3	10.4
New Zealand	71.8	60.4	58.2	47.8	45.0	61.7	78.1	60.3	74.0	82.4	73.7	73.6
Papua New Guinea	4.7	3.7	5.9	4.2	3.1	3.1	3.5	2.9	4.3	4.5	3.0	4.3
Singapore	18.7	34.3	35.4	10.4	24.6	23.7	21.2	21.0	32.1	16.4	14.9	15.3
United Kingdom	54.3	67.6	57.2	46.4	60.1	55.4	52.4	27.2	25.8	38.7	31.5	33.7
United States of America	36.4	34.2	45.1	34.8	41.6	42.4	34.7	30.3	42.4	43.8	32.1	53.6
Other and not stated	110.6	112.4	144.2	124.8	129.5	107.4	116.5	89.4	89.9	135.8	108.4	141.3
<b>Total</b>	<b>397.0</b>	<b>416.7</b>	<b>460.8</b>	<b>360.8</b>	<b>434.6</b>	<b>411.9</b>	<b>405.6</b>	<b>319.3</b>	<b>347.9</b>	<b>429.0</b>	<b>368.3</b>	<b>406.5</b>
SEASONALLY ADJUSTED												
Canada	6.7	6.5	6.8	6.4	6.7	6.8	7.0	7.1	7.3	6.9	8.6	10.8
Germany	12.7	12.7	14.0	12.2	11.4	11.5	11.5	12.5	11.5	11.5	11.5	15.1
Hong Kong (SAR of China)	12.0	12.5	10.9	13.3	11.8	11.4	14.5	13.6	13.1	13.2	12.2	6.6
Japan	65.3	61.0	55.3	48.8	60.9	62.4	58.5	59.6	62.4	56.5	56.4	51.5
Malaysia	12.2	11.8	13.0	13.2	11.8	13.1	13.2	11.0	12.3	12.8	12.0	10.1
New Zealand	61.7	64.8	58.2	62.7	64.7	69.9	72.8	66.2	70.0	68.4	64.3	61.9
Papua New Guinea	4.6	4.1	4.0	3.4	4.0	4.1	3.6	3.9	4.1	3.7	3.6	4.0
Singapore	23.2	24.6	19.1	21.9	22.6	24.6	25.4	23.6	21.6	24.3	21.0	18.2
United Kingdom	51.3	48.9	36.0	41.4	43.8	43.5	56.0	47.8	45.1	54.4	50.5	41.8
United States of America	33.5	33.8	41.0	36.9	32.0	36.7	37.9	39.5	41.2	39.8	37.7	70.1
Other and not stated	104.7	108.2	108.2	111.2	112.5	112.8	118.0	116.1	117.5	118.0	120.6	175.3
<b>Total</b>	<b>387.8</b>	<b>389.0</b>	<b>366.6</b>	<b>371.4</b>	<b>382.2</b>	<b>396.8</b>	<b>418.4</b>	<b>400.8</b>	<b>406.0</b>	<b>409.5</b>	<b>398.6</b>	<b>465.3</b>
TREND												
Canada	6.6	6.6	6.6	6.7	6.7	6.7	6.8	7.1	7.5	8.0	8.3	8.4
Germany	12.8	12.8	12.7	12.4	12.1	11.8	11.6	11.6	11.9	12.2	12.5	12.6
Hong Kong (SAR of China)	12.4	12.2	12.1	12.1	12.4	12.8	13.2	13.2	12.8	12.2	11.5	11.0
Japan	58.7	58.2	57.6	57.4	57.8	58.7	59.6	59.5	58.4	57.4	57.7	59.4
Malaysia	12.3	12.5	12.7	12.7	12.7	12.6	12.5	12.3	11.9	11.7	11.9	12.4
New Zealand	62.0	62.1	62.7	63.9	65.7	67.7	69.1	69.1	68.0	66.6	66.1	66.9
Papua New Guinea	4.0	4.0	4.0	3.9	3.9	3.8	3.8	3.9	3.9	3.9	3.9	3.9
Singapore	23.8	22.9	22.4	22.4	22.9	23.5	23.9	23.7	23.0	22.2	21.8	21.8
United Kingdom	48.2	45.7	43.7	43.0	43.7	45.7	47.9	49.4	49.7	49.2	48.7	48.7
United States of America	35.5	35.7	35.9	36.0	36.4	36.4	37.0	38.7	41.3	43.8	45.5	46.1
Other and not stated	107.9	108.5	109.3	110.6	112.2	112.9	113.8	116.4	121.3	127.3	132.6	136.0
<b>Total</b>	<b>384.1</b>	<b>381.1</b>	<b>379.6</b>	<b>381.1</b>	<b>386.3</b>	<b>392.7</b>	<b>399.2</b>	<b>405.0</b>	<b>409.8</b>	<b>414.5</b>	<b>420.3</b>	<b>427.1</b>



## EXPLANATORY NOTES

### INTRODUCTION

**1** This publication brings together domestic tourism data from a number of sources, including previously unpublished data from the quarterly Survey of Tourist Accommodation (STA) and the Overseas Arrivals and Departures Collection (OAD).

### TOURIST ACCOMMODATION

**2** The series of tables and graphs in the tourist accommodation section of this publication contain statistics for Australia and each State and Territory. Statistics in this publication are the latest available for the September quarter 2000.

### SCOPE AND COVERAGE

**3** Tourist accommodation establishments included in the STA and for which data appear in this publication, are hotels, motels and guest houses with facilities; and serviced apartments which are available to the general public for a minimum of one night. Every third year, beginning with 2000, the STA is expanded to include holiday flats, units and houses of letting entities; caravan parks and visitor hostels. Further information can be found in *Tourist Accommodation, Australia* (Cat. no. 8635.0), available from ABS bookshops or by contacting Paull Hoffmann on Brisbane 07 3222 6201.

**4** Data collected and published relate to both long-term and short-term guests at hotels, motels and guest houses, and only short-term guests at serviced apartments. For hotels, motels and guest houses the amount of long-term residential activity is considered insignificant. This activity is included in the data presented.

**5** As a result of the separate classification of serviced apartments from the March quarter 1998, there have been several changes to definitions of accommodation units. Some units which were previously classified as hotels, motels or holiday flats have been reclassified to serviced apartments. A small number of establishments previously classified as motels, have been reclassified as holiday flats, units or houses, and are no longer in scope of the quarterly STA.

**6** From the March quarter 1998, only those in-scope establishments with 15 or more rooms or units are covered by the survey. Data for the 1997 calendar year have been recompiled on the new basis. Data for time periods prior to 1997 have been recompiled to only include accommodation establishments with 15 or more rooms, but have not been recompiled to reflect the inclusion of serviced apartments as a separate classification. This means that data for periods prior to the March quarter 1997 reflect the old classification and only include hotels, motels and guest houses. It should be noted that some serviced apartments may have been included in STA estimates prior to the March quarter 1997, as they may previously have been classified as hotels or motels, as outlined in paragraph 5 above.

## SCOPE AND COVERAGE

*continued*

**7** As a result of the changes to the scope and classification of accommodation establishments there is a break in all time series between the December quarter 1996 and the March quarter 1997.

**8** From 1 July 2000, the item 'takings from accommodation' includes the Goods and Services Tax (GST).

## ESTIMATES AT CONSTANT PRICES

**9** Estimates of quarterly takings from accommodation contained in this publication are also expressed in terms of average 1989–90 prices (constant prices). These estimates are presented in original, seasonally adjusted and trend terms, for Australia and each State and Territory. Monthly data at constant prices are not available.

**10** Takings from accommodation for each State and Territory have been deflated using the All Groups Consumer Price Index (CPI) for the relevant capital city. The CPI has been used as it is a measure of the general extent of price change (inflation) in the economy. (Note: the CPI is only produced for capital cities.) As an example, an increase of 10% in the New South Wales takings from accommodation at 1989–90 prices over a period would mean that New South Wales takings from accommodation increased 10% more than the Sydney CPI over that period, implying that takings from accommodation in New South Wales increased 10% more than inflation.

**11** General information on price deflators and constant price estimates is contained in section 4 of *Australian National Accounts: Concepts, Sources and Methods, 1989* (Cat. no. 5216.0).

## INTERNATIONAL TOURISM

**12** The series of tables and graphs in the international tourism section of this publication contain statistics on short-term visitors arriving in or departing from Australia, and departures of Australian residents for short-term trips abroad. Short-term movement relates to an intended length of stay of less than 12 months.

## SOURCE OF THE STATISTICS

**13** Persons arriving in, or departing from Australia, are required to complete prescribed questionnaires in the form of Incoming and Outgoing Passenger Cards. These cards provide information to the Department of Immigration and Multicultural Affairs (DIMA) for administrative purposes and serve as the source of statistics of overseas arrivals and departures. In accordance with the *Census and Statistics Act 1905*, information relating to individuals, individual flights or ships and individual carriers, which is contained in these cards or other documents, is treated as confidential by the Australian Bureau of Statistics.

**14** Implementation of the *Migration Reform Act 1992* by DIMA required that a health and character check be incorporated with the Incoming Passenger Card. The redesign of both passenger cards followed and new passenger cards were officially introduced on 1 September 1994. The main statistical change relating to data in this publication affects the purpose of journey classification and constitutes a break in time series for this data item.

## SOURCE OF THE STATISTICS

*continued*

**15** From July 1998 there have been changes to passenger cards completed by travellers entering and leaving Australia, as well as to international passenger procedures and DIMA computer systems. Please refer to the May 1998 issue of *Overseas Arrivals and Departures, Australia* (Cat. no. 3401.0).

## SCOPE

**16** The statistics in this publication relate to the number of movements of travellers rather than the number of travellers (i.e. the multiple movements of individual persons during a given reference period are each counted separately). The statistics exclude the movements of operational air and ships' crew, of transit passengers who pass through Australia but are not cleared for entry, and of passengers on pleasure cruises commencing and finishing in Australia aboard ships not then engaged on regular voyages.

## ESTIMATION METHOD

**17** Overseas arrival and departure statistics are derived from a combination of full enumeration and sampling. All movements with a duration of stay of less than one year are sampled. Statistics relating to these movements are therefore estimates, which may differ from statistics which would have been obtained if details of all these movements had been processed.

## CORRECTIONS AND IMPUTATIONS

**18** Imprecision due to sampling errors should not be confused with errors arising from imperfections in reporting, which may occur in any data collection, whether sampled or not. Every effort is made to minimise such errors, by careful design of the passenger cards and through checks on the information once it is received. During the edit process some items are corrected where they conflict with other known information. Missing replies to certain items such as age are also imputed by reference to other related items.

**19** Errors of this kind differ from discrepancies arising from the fact that certain information reflects the travellers' intentions, at the time the passenger cards were completed. These intentions are, of course, subject to change. Particularly affected is the distinction between permanent and temporary movement and in the latter case, length of intended stay, country in which most time will be spent, and purpose of journey.

## SEASONAL ADJUSTMENTS

**20** Seasonally adjusted and trend estimates are shown in various graphs and tables throughout this publication. In these series, account has been taken of normal seasonal factors, 'trading day' effects (arising from the varying number of Sundays, Mondays, Tuesdays etc. in the month) and the effect of movement in the date of Easter which may, in successive years, affect figures for the months of March and April. Details of the methods used in seasonally adjusting the series from the STA and OAD collections are available on request.

## SEASONAL ADJUSTMENTS

*continued*

**21** Seasonal adjustment is a means of removing the estimated effects of normal seasonal variation from the series so that the effect of other influences on the series may be more clearly recognised. Seasonal adjustment procedures do not aim to remove the irregular or non-seasonal influences which may be present in any particular month. Irregular influences that are highly volatile can make it difficult to interpret the movement of the series even after adjustment for seasonal variation, and cannot be assumed to indicate changes in the trend.

**22** As happens with all seasonally adjusted series, the seasonal factors are reviewed annually to take account of each additional year's data. For the Survey of Tourist Accommodation, the results of the latest review are shown in the March quarter issue of this publication. For the Overseas Arrivals and Departures series, the results of the latest review of seasonal factors are shown in the September quarter issue.

## TREND ESTIMATES

**23** Smoothing seasonally adjusted series reduces the impact of the irregular component of the seasonally adjusted series and creates the trend estimates. The trend estimates are derived by applying a 13-term weighted moving average to the monthly and a 7-term Henderson moving average to the quarterly seasonally adjusted series. The 7- and 13-term Henderson averages (like all Henderson averages) are symmetric but, as the end of a time series is approached, asymmetric forms of the average are applied. Unlike the weights of the standard 7-term Henderson moving average, the weights employed with the quarterly data have been tailored to suit the particular characteristics of individual series.

**24** While these techniques enable smoothed data for the latest period to be produced, it does result in revisions to the smoothed series, principally of recent months, as additional observations become available. There may also be revisions as a result of the re-estimation of the seasonal factors. For further information refer to, *Information Paper: A Guide to Interpreting Time Series—Monitoring Trends, an Overview, 1993* (Cat. no. 1348.0), or contact the Assistant Director, Time Series Analysis on Canberra 02 6252 6345.

## RELATED PUBLICATIONS

**25** Comprehensive definitions and explanations, and detailed data are contained in the publications below, which can be obtained from ABS Bookshops or by mail order:

*Australian National Accounts: Tourism Satellite Account 1997-98*

(Cat. no. 5249.0) - irregular

*Business Use of Information Technology 1999-2000, Australia* (Cat. no. 8129.0)

*Cafes and Restaurants Industry, Australia* (Cat. no. 8655.0) - irregular

*Casinos, Australia 1999-2000* (Cat.No 8683.0) - irregular

*Consumer Price Index* (Cat. no. 6401.0) — issued quarterly

*Directory of Tourism Statistics, 2000* (Cat. no. 1130.0) — irregular

*Household Expenditure Survey: Detailed Expenditure items* (Cat. no. 6535.0)

*Overseas Arrivals and Departures, Australia* (Cat. no. 3401.0) — issued monthly

*Migration, Australia* (Cat. no. 3412.0) — issued annually

*Retail Industry, Australia* (Cat. no. 8622.0) - irregular

*Tourist Accommodation, Australia* (Cat. no. 8635.0) — issued quarterly

Tourist accommodation small area data for each State and the Northern Territory — issued quarterly

**26** Current publications produced by the ABS are listed in the *Catalogue of Publications and Products* (Cat. no. 1101.0). The ABS also issues on Tuesdays and Fridays, a *Release Advice* (Cat. no. 1105.0) which lists publications to be released in the next few days. Both are available from any ABS office or the ABS website.

**27** Related statistics are also published by the Bureau of Tourism Research, DIMA and the Department of Transport and Regional Services.

## ADDITIONAL STATISTICS AVAILABLE

**28** As well as the statistics included in this and related publications, the ABS can make available information which is not published. Generally a charge is made for providing unpublished information.

## ROUNDING

**29** Where figures have been rounded, discrepancies may occur between sums of the component items and totals.

## SYMBOLS AND OTHER USAGES

ABS	Australian Bureau of Statistics
Aust.	Australia
CPI	Consumer Price Index
DIMA	Department of Immigration and Multicultural Affairs
n.a.	not available
n.y.a.	not yet available
n.p.	not published
p	preliminary
NZ	New Zealand
OAD	Overseas Arrivals and Departures Collection
STA	Survey of Tourist Accommodation
UK	United Kingdom
USA	United States of America
—	nil or rounded to zero
. .	not applicable

## GLOSSARY

<b>Average length of stay</b>	<p>Average length of stay is expressed in numbers of days and calculated:</p> <ul style="list-style-type: none"> <li>■ for hotels, motels and guest houses, by dividing guest nights by guest arrivals; and</li> <li>■ for serviced apartments, by dividing units nights occupied by unit lettings.</li> </ul>
<b>Average nightly guests per occupied room</b>	Guest nights divided by room nights occupied.
<b>Average nightly rooms occupied per establishment</b>	The average number of rooms per establishment multiplied by the occupancy rate for the survey period.
<b>Average takings per establishment</b>	The takings from accommodation for the survey period divided by the number of establishments at the end of the survey period.
<b>Average takings per guest night</b>	The takings from accommodation divided by the total number of guest nights for the survey period.
<b>Average takings per room night available</b>	The takings from accommodation divided by the total room nights available for the survey period.
<b>Average takings per room night occupied</b>	The takings from accommodation divided by the total number of room nights occupied for the survey period.
<b>Capacity</b>	Capacity in terms of guest rooms/units or bed spaces is the maximum number available to accommodate paying guests during the survey period. Capacity closed temporarily for seasonal reasons is included.
<b>Country of intended stay</b>	For Australian residents travelling abroad for short-term trips, this relates to the country in which they intend to spend the most time.
<b>Country of residence</b>	<p>Refers to the country in which short-term visitors regard themselves as living or as last having lived.</p> <p>The classification of countries in this publication is based on the Standard Australian Classification of Countries. For more detailed information, refer to <i>Standard Australian Classification of Countries (SACC)</i>, 1998 (Cat. no. 1269.0).</p>
<b>Establishments</b>	All hotels, motels, guest houses and serviced apartments within the scope of the survey which operated for any part of the survey period, or which closed temporarily for the quarter for seasonal reasons.
<b>Guest nights</b>	The total number of paying guests counted on each night they stayed at the accommodation establishment.

<b>Guest rooms</b>	The maximum number of rooms available at each establishment during the survey period for accommodating short-term paying guests. Units and apartments within serviced apartments are treated as rooms in these survey results.
<b>Median length of stay</b>	Defined as the length of stay which divides the relevant population into two equal parts, one half of the cases falling below the median and the other half exceeding it.
<b>Occupancy rate</b>	Occupancy expressed as a percentage of total capacity available during the survey period, e.g. for the period.  $\text{Room occupancy rate (\%)} = \frac{\text{Room nights occupied} \times 100}{(\text{Guest rooms}) \times (\text{no. of days in the period})}$
<b>Person days</b>	Defined as the number of short-term visitor arrivals or short-term resident departures multiplied by the intended length of stay for each visitor or resident.
<b>Room nights available</b>	The total of guest rooms/units available multiplied by the number of days for which each was available during the survey period.
<b>Room nights occupied</b>	The total number of nights each guest room/unit was occupied by a paying guest during the survey period.
<b>Rooms per establishment</b>	The average number of rooms/units per establishment.
<b>Short-term movement</b>	Movements of travellers whose intended or actual length of stay is less than 12 months are classified as short-term. The tables for visitor arrivals and resident departures in this publication relate to short-term movements only.
<b>Star grading</b>	The grading of hotels and motels with facilities and serviced apartments is based on the classification system used by members of the Australian Automobile Association (AAA). The gradings are allocated according to a points system based on the amenities and facilities available to guests. Details of the grading scheme are contained in the RACV-RAASA members' publication <i>Accommodation Australia</i> , or the individual tour guides produced by members of the AAA. For the purpose of classifying establishments to a star grading in this publication, 'half' star gradings are ignored (e.g. a two and a half star grading has been shown as a two star).
<b>Takings from accommodation</b>	Gross revenue from the provision of accommodation, including (since 1 July 2000) the Goods and Services Tax (GST). Prior to GST, bed taxes were included. Takings from meals are excluded. Takings from accommodation for each month generally represent the takings received during that month. Where payments are received in advance of, or after, the provision of accommodation to guests, the monthly figure for takings from accommodation may not necessarily bear a direct relationship to the number of guests accommodated during the month.



## FOR MORE INFORMATION...

- INTERNET** [www.abs.gov.au](http://www.abs.gov.au) the ABS web site is the best place to start for access to summary data from our latest publications, information about the ABS, advice about upcoming releases, our catalogue, and Australia Now—a statistical profile.
- LIBRARY** A range of ABS publications is available from public and tertiary libraries Australia-wide. Contact your nearest library to determine whether it has the ABS statistics you require, or visit our web site for a list of libraries.
- CPI INFOLINE** For current and historical Consumer Price Index data, call 1902 981 074 (call cost 77c per minute).
- DIAL-A-STATISTIC** For the latest figures for National Accounts, Balance of Payments, Labour Force, Average Weekly Earnings, Estimated Resident Population and the Consumer Price Index call 1900 986 400 (call cost 77c per minute).

## INFORMATION SERVICE

Data which have been published and can be provided within five minutes are free of charge. Our information consultants can also help you to access the full range of ABS information—ABS user-pays services can be tailored to your needs, time frame and budget. Publications may be purchased. Specialists are on hand to help you with analytical or methodological advice.

- PHONE** **1300 135 070**
- EMAIL** **[client.services@abs.gov.au](mailto:client.services@abs.gov.au)**
- FAX** 1300 135 211
- POST** Client Services, ABS, GPO Box 796, Sydney 1041

## WHY NOT SUBSCRIBE?

ABS subscription services provide regular, convenient and prompt deliveries of ABS publications and products as they are released. Email delivery of monthly and quarterly publications is available.

- PHONE** 1300 366 323
- EMAIL** [subscriptions@abs.gov.au](mailto:subscriptions@abs.gov.au)
- FAX** 03 9615 7848
- POST** Subscription Services, ABS, GPO Box 2796Y, Melbourne 3001



2863400009008  
ISSN 1321-4144

RRP \$27.00